

## Ver4.0 (The method is different from Ver2.0)

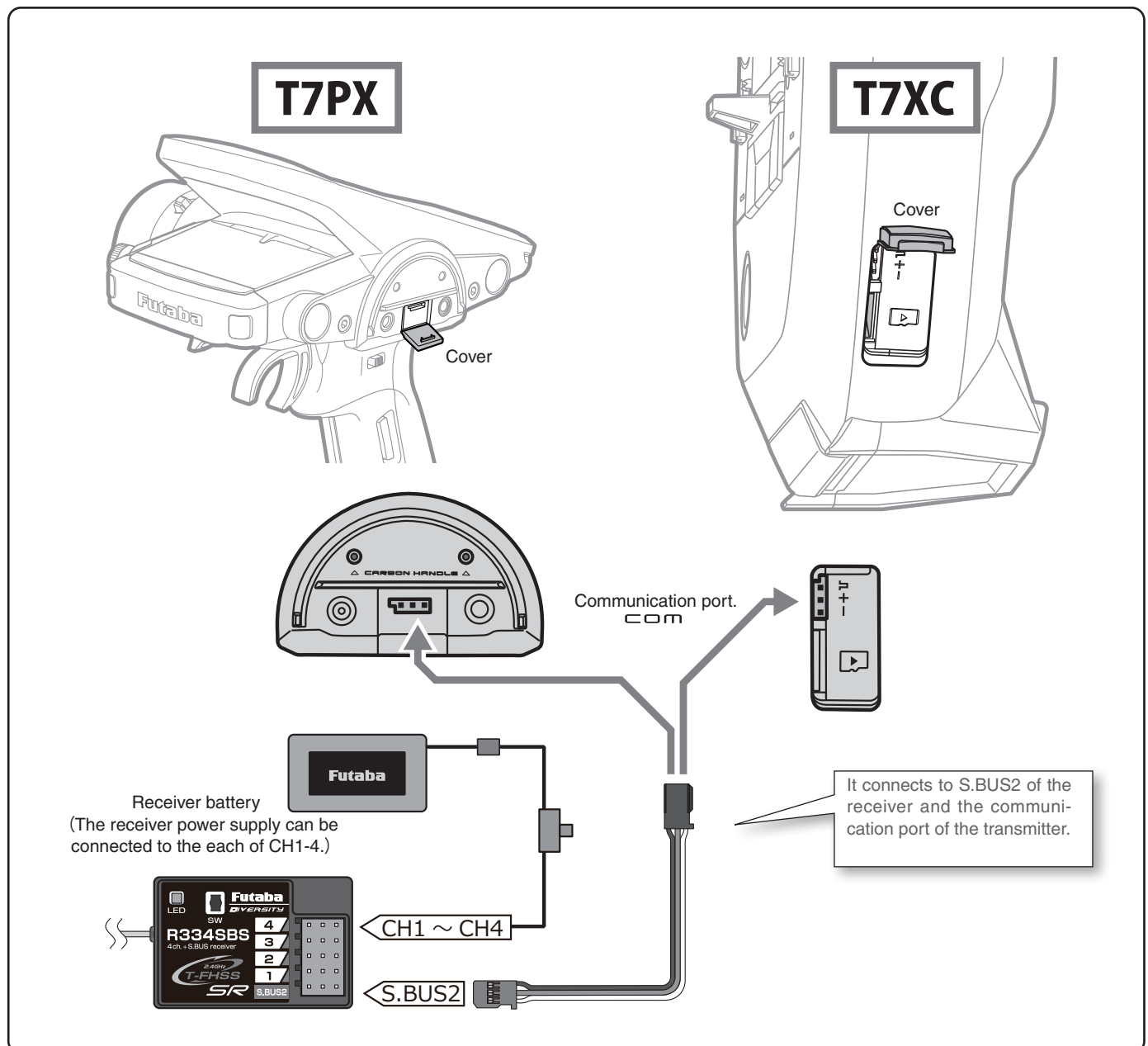
This is a method to update the Futaba R334SBS / R334SBS-E receiver from the T7PX/T7XC.

To update the receiver, you need a PC that can be connected to the Internet, a mini driver (to push the switch of the receiver), a micro SD card (commercial product), and a cord for CGY750 / GY701 / GY520 (optional) or DSC cord (optional).

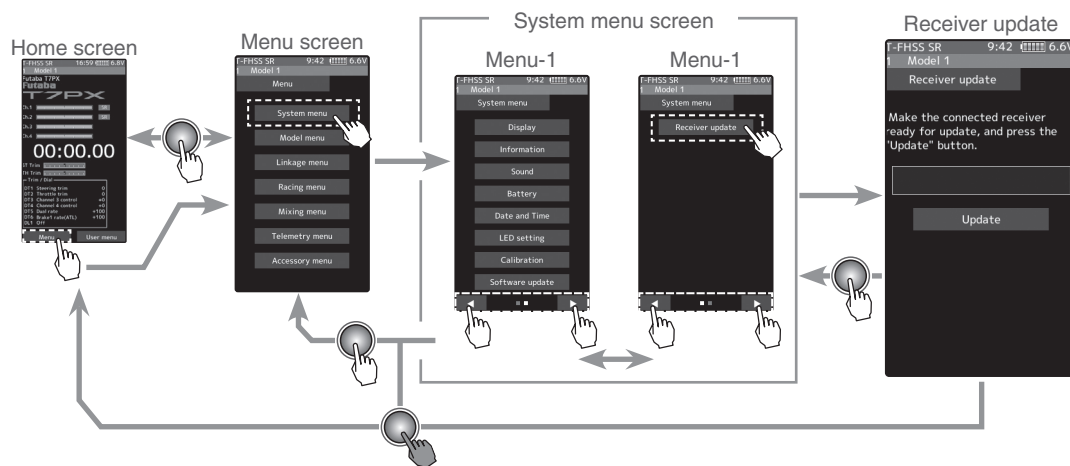
### Preparing for update

- Download the zip file of the update data from our website or your local distributor's website.
- Extract the zip file on your computer. A folder named "FUTABA" is created.
- Insert the micro SD card that contains the "FUTABA" folder into the T7PX(see page 31 of the manual)/ T7XC(see page 27 of the manual).

### Connection between T7PX/T7XC and receiver

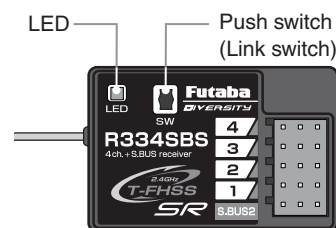


Turn on the DSP or PWR switch of T7PX/T7XC and display the receiver update screen.

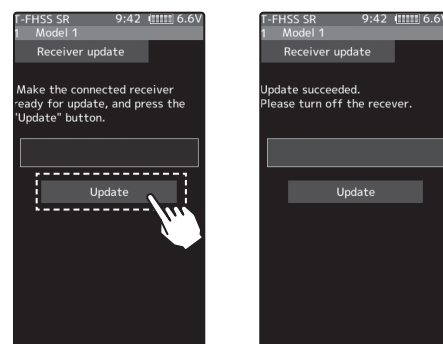


## Update method

- 1 Hold down the Link switch first, and turn ON the receiver.  
After the LED flashing red once, release the Link switch and then press it again.  
As you continue holding down the Link switch, the LED starts solid red and green. (Once solid Red and Green, the initial process is complete.)  
- If red and green do not turn on at the same time, please start over from the beginning.



- 2 Tap the "Update" button on the screen. The update will start. A progress bar will be displayed indicating the progress. The LED of the receiver turns green, and it blinks green for a moment every time it accepts data from the T7PX/T7XC.  
- Do not turn off the power of T7PX/T7XC while updating.



- 3 When the update is completed, a message is displayed on the screen, and the LED of the receiver stays solid green. Please turn off the power of the receiver.  
Please check the operation before running (cruising).

- 4 When finished, return to the System menu screen by pressing the HOME button.

### Error

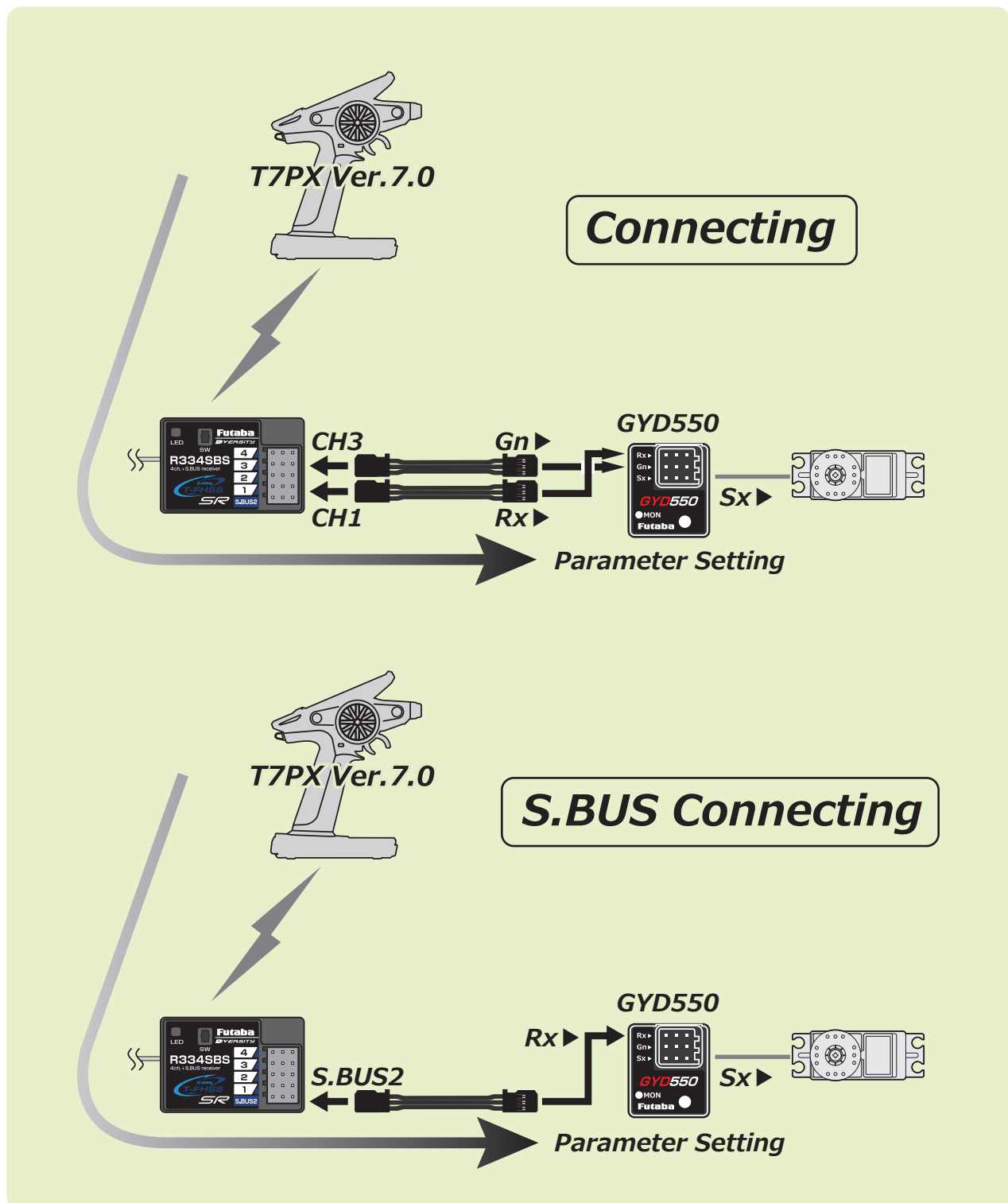
If an error display appeared, reinstall the update from the beginning.

- The receiver is not in the update wait state.
- The cable is disconnected.
- The power has been turned off
- The micro SD card is not inserted in the T7PX/T7XC.
- There is no data on micro SD card.

**Compatible with Wireless GYD550 parameters setting function**

- The operating parameters of the Futaba GYD550 Drift gyro connected to receiver can be set and changed from the transmitter wirelessly.
- The operating parameters of the Futaba programmable S.BUS2 servo connected to GYD550 can be set and changed from the transmitter wirelessly.

\*Transmitter (T7PX/T7XC) also needs to be updated to version 7.0.



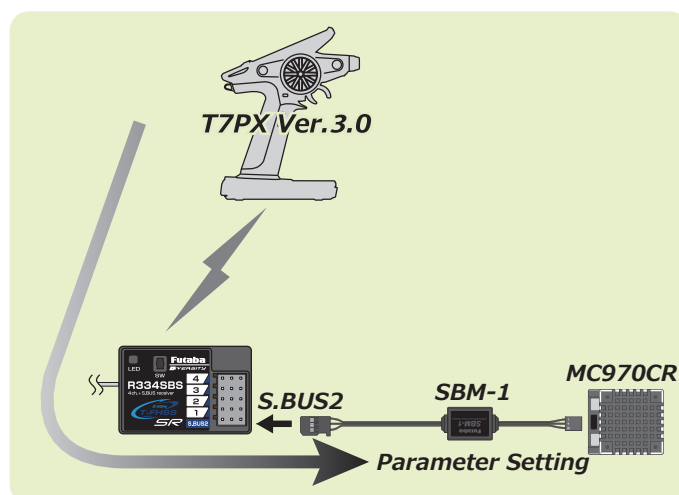
# R334SBS/R334SBS-E SOFTWARE UPDATE CHANGES

Version: 3.0

## 1. Compatible with Wireless MC970CR parameters setting function

The operating parameters of the Futaba MC970CR connected to receiver can be set and changed from the transmitter wirelessly.

\*Transmitter (T7PX/T7XC) also needs to be updated to version 3.0.



# R334SBS/R334SBS-E SOFTWARE UPDATE CHANGES

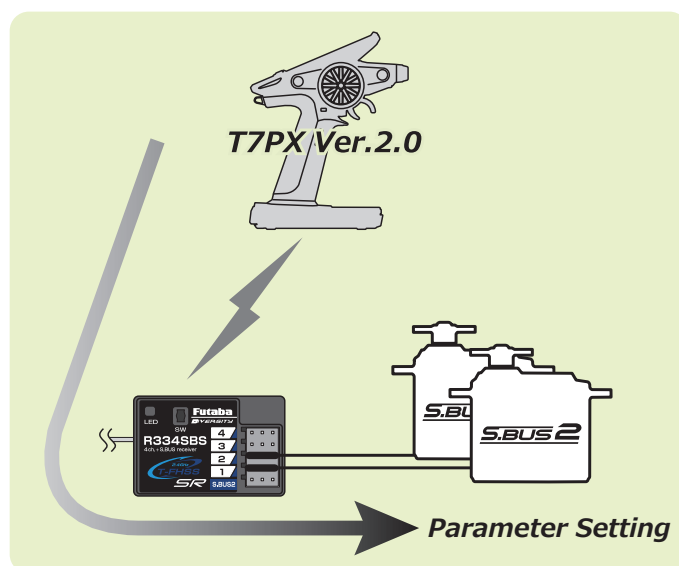
Version: 2.0

## 1. Compatible with Wireless S.BUS setting function

The operating parameters of the Futaba programmable S.BUS2 servo connected to receiver can be set and changed from the transmitter wirelessly.

\*Transmitter (T7PX) also needs to be updated to version 2.0.

\*Please refer to the update manual of the T7PX transmitter (Ver.2.0) for how to use the wireless S.BUS setting.



FUTABA CORPORATION

oak kandakajicho 8F 3-4 Kandakajicho, Chiyoda-ku, Tokyo 101-0045, Japan  
TEL: +81-3-4316-4820, FAX: +81-3-4316-4823