

R334SBS/R334SBS-E Software update manual

Your Futaba R334SBS/R334SBS-E program can be updated easily online. When functions are improved, the update file can be downloaded from Futaba distributor's website.

*The screen can vary based on the PC.

Required for update (Purchase separately)



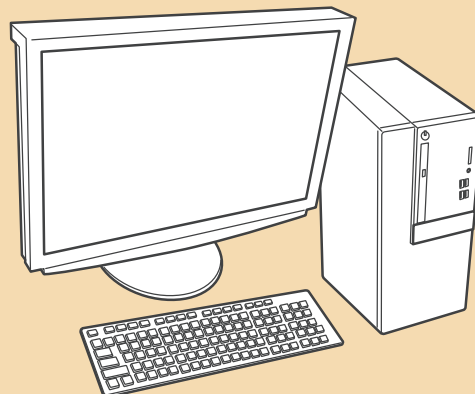
CIU-3 or CIU-2
(optional)



CGY750/GY701/GY520 Extensions (optional)
or
DSC cable (optional for 4PV)



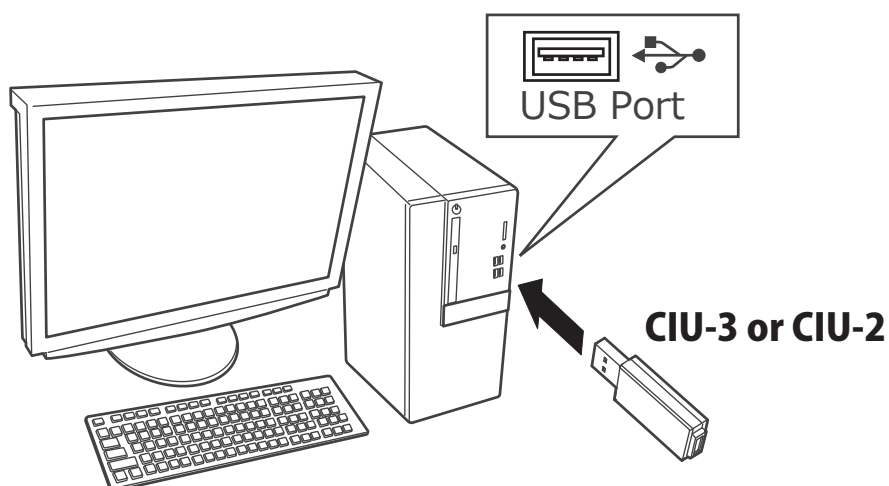
Mini Driver (To push the switch of
the receiver)



PC
(Download is possible by the web)

Preparations

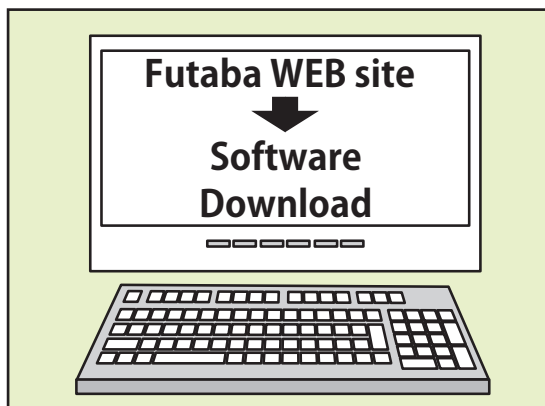
1. Install the driver for the CIU-3/CIU-2 onto your PC.



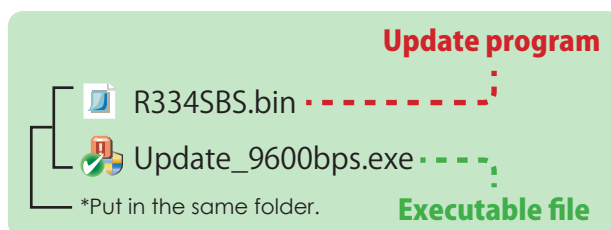
- ◆ When the **CIU-3** is first connected to the PC, download the recommended driver software. The "Found New Hardware Wizard" window appears on the screen. Click "Locate and install driver software".
- ◆ When the **CIU-2** is first connected to the PC, the "Found New Hardware Wizard" window appears on the screen. Install the drivers download from local Futaba distributor's Website.
- ◆ Refer to the manual of the CIU-3/CIU-2 for further information.

Updating procedure

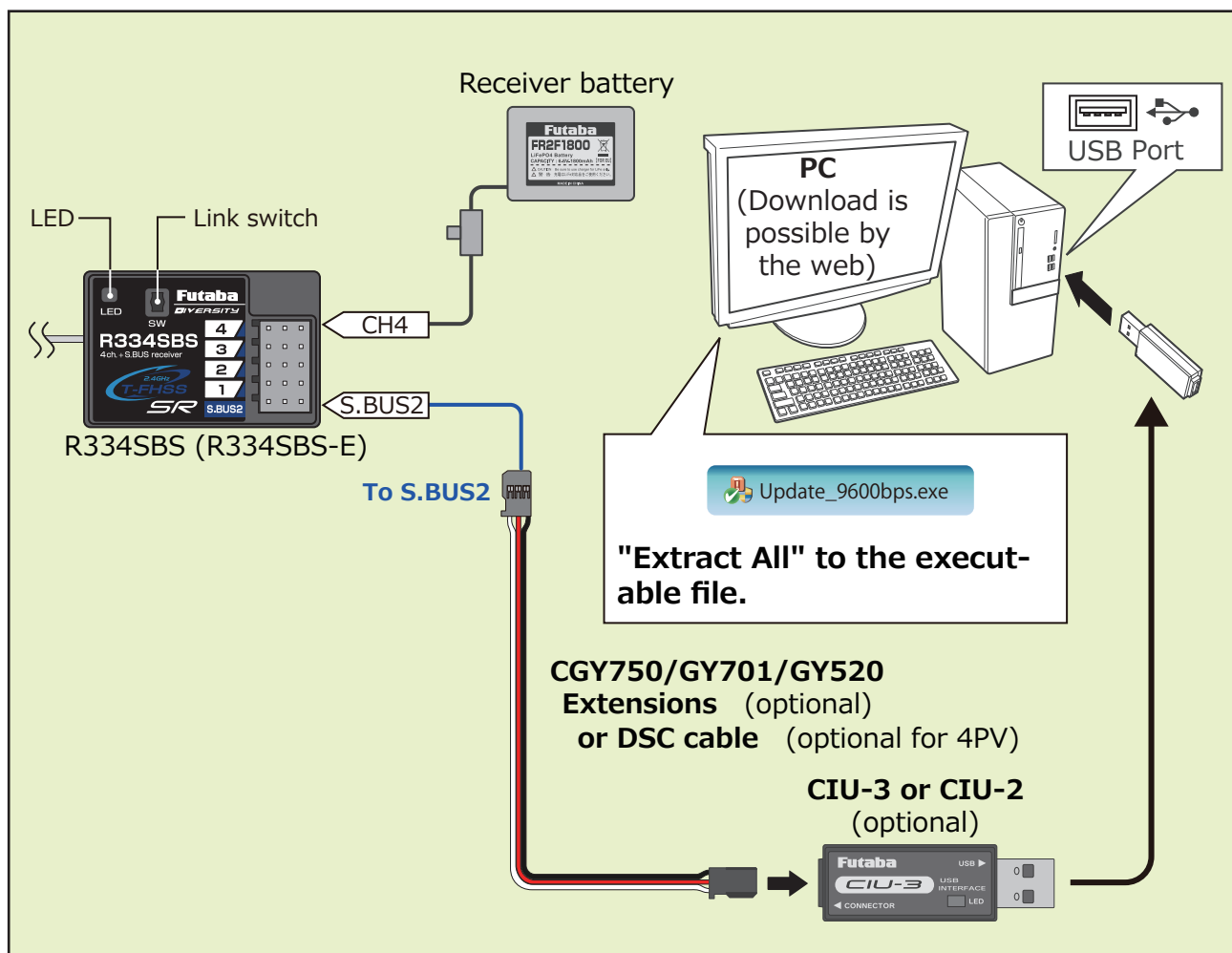
1. Download the zip file of the update data from your local distributor's website.



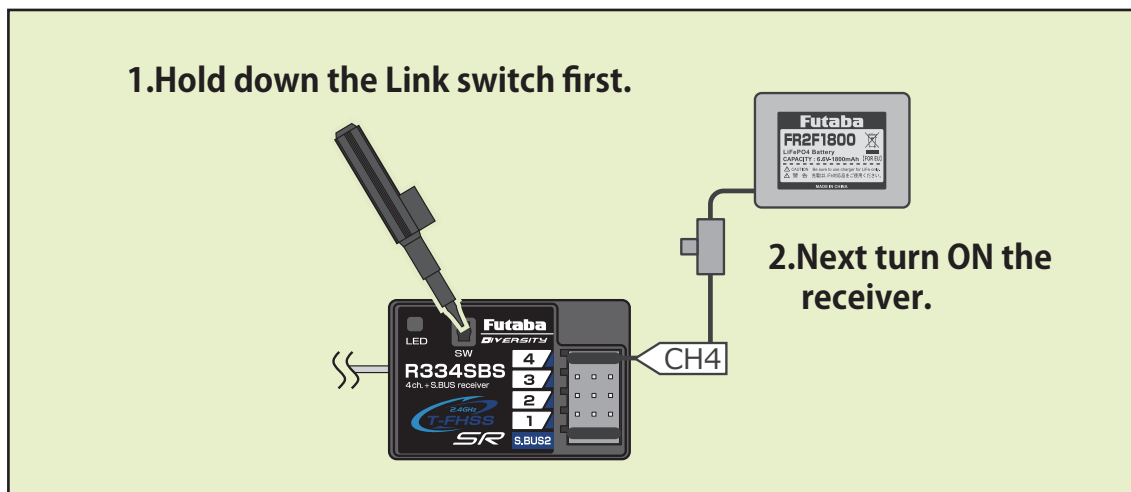
2. Extract the zip file on your computer.



3. Connect as shown in the diagram.



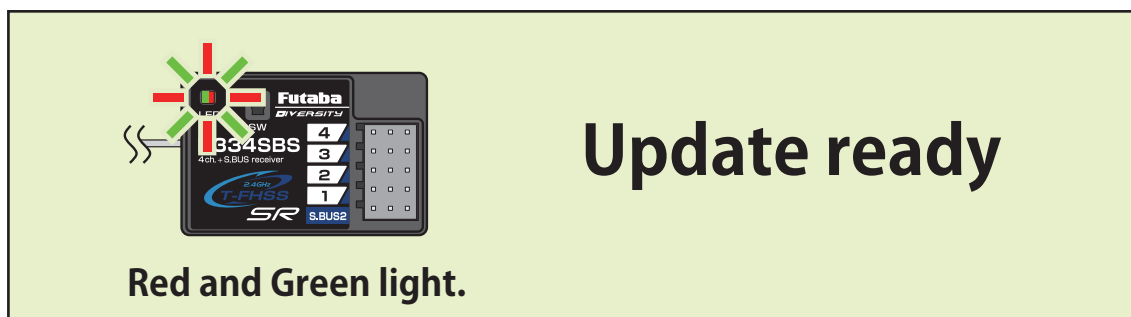
4. Turn on the receiver power while pressing down the Link switch.



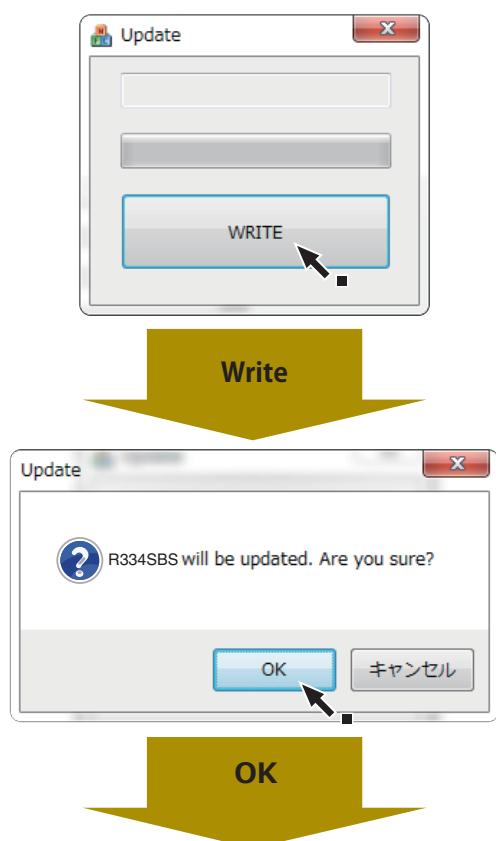
5. Once the LED confirms by flashing red once, release the Link switch and press again.

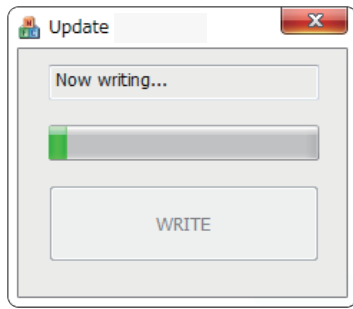
6. When you continue pushing the Link switch, the LED starts solid red and green.

(Once solid Red and Green, the initial process is complete.)



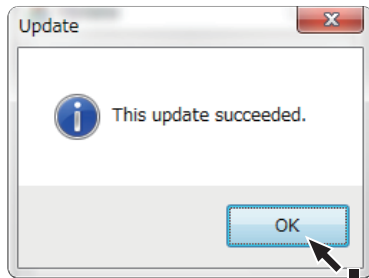
7. Start the PC update. (The receiver should keep red and green on.)



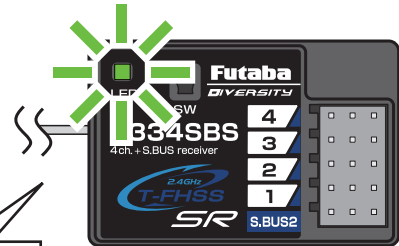


Wait for about 2 minutes.

Don't turn off the power !



Green steady light



Completed

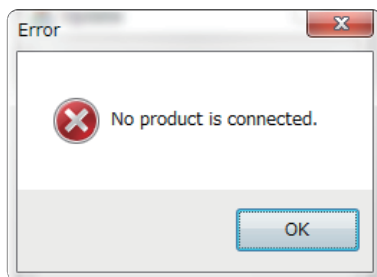
R334SBS/R334SBS-E

8. Turn off the power switch of your receiver and remove the CIU-3/CIU-2.

9. Be sure to check each function before use.

Error

1. If an error display appears, replace an with the update from the beginning.

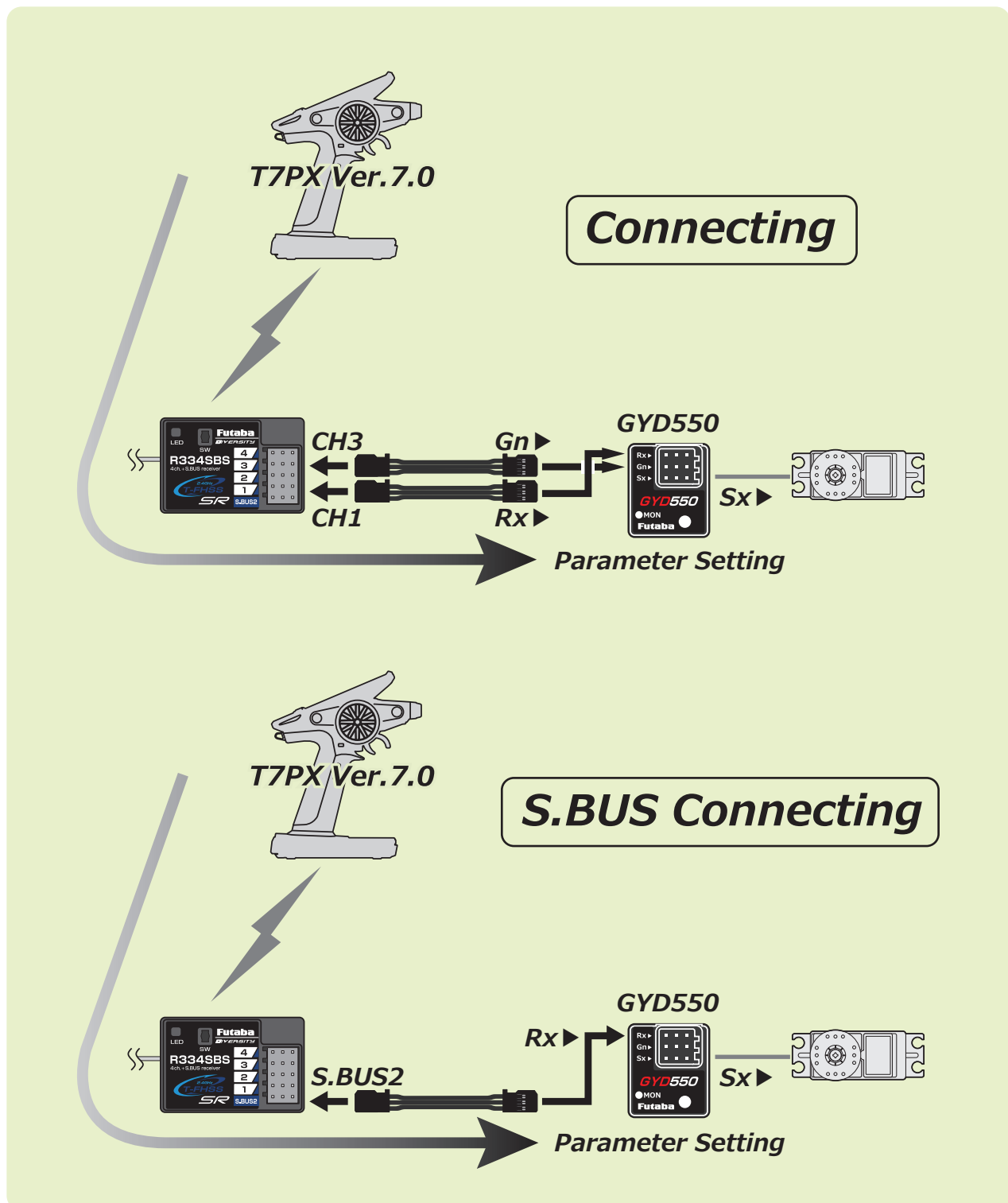


- ◆ The receiver is not in the update "ready".
- ◆ The cable is disconnected.
- ◆ The power has been turned off.

Compatible with Wireless GYD550 parameters setting function

- The operating parameters of the Futaba GYD550 Drift gyro connected to receiver can be set and changed from the transmitter wirelessly.
- The operating parameters of the Futaba programmable S.BUS2 servo connected to GYD550 can be set and changed from the transmitter wirelessly.

*Transmitter (T7PX/T7XC) also needs to be updated to version 7.0.



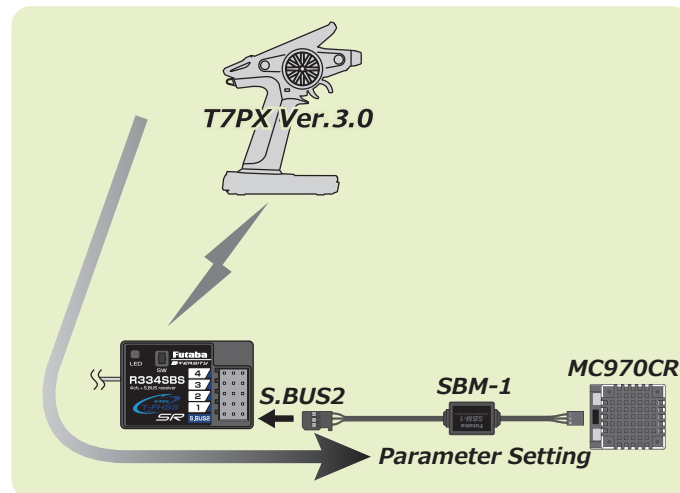
R334SBS/R334SBS-E SOFTWARE UPDATE CHANGES

Version: 3.0

Compatible with Wireless MC970CR parameters setting function

The operating parameters of the Futaba MC970CR connected to receiver can be set and changed from the transmitter wirelessly.

*Transmitter (T7PX/T7XC) also needs to be updated to version 3.0.



R334SBS/R334SBS-E SOFTWARE UPDATE CHANGES

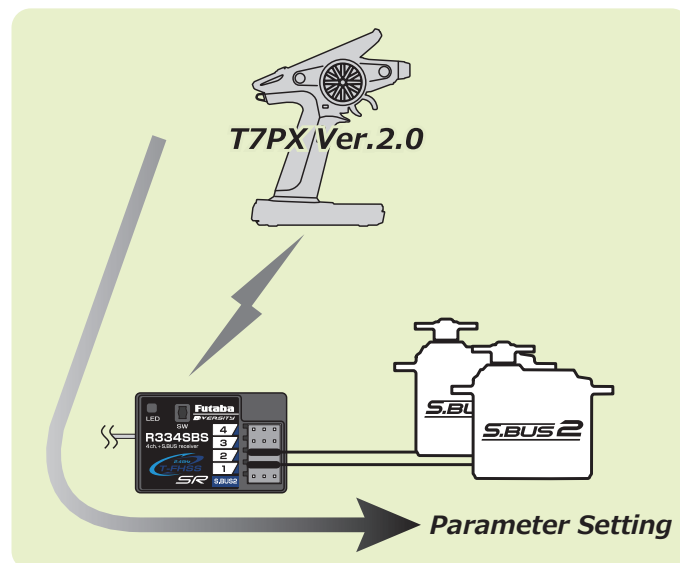
Version: 2.0

Compatible with Wireless S.BUS setting function

The operating parameters of the Futaba programmable S.BUS2 servo connected to receiver can be set and changed from the transmitter wirelessly.

*Transmitter (T7PX) also needs to be updated to version 2.0.

*Please refer to the update manual of the T7PX transmitter (Ver.2.0) for how to use the wireless S.BUS setting.



FUTABA CORPORATION

oak kandakajicho 8F 3-4 Kandakajicho, Chiyoda-ku, Tokyo 101-0045, Japan
TEL: +81-3-4316-4820, FAX: +81-3-4316-4823

©FUTABA CORPORATION 2020, 2 (1)