

# NEW ITEMS Nº 1 2026





## H0

4

Anniversary models 2026	4 – 5, 14 – 15
Trade, business, industry	6 – 7
Railway stations, railway buildings	8
The town, the village	9 – 10, 12 – 13
Classics	11
Scenic modelling	16 – 17
Models of the month	18 – 19
Miniature figures	20 – 21



Magnificent estate - the majestic hunting lodge impresses with its detailed architecture and adds royal flair to any model landscape.

P. 12-13

## N

22

Railway stations, railway buildings	22
Trade, business, industry	23
The town, the village	24
Classics	24
Models of the month	25
Miniature figures	25
Anniversary models 2026	26 – 27



Precisely controlled - the lock with lock keeper's house ensures realistic shipping traffic on your model layout.

P. 16

## Z

28

Anniversary model 2026	28
Railway stations, railway buildings	29
Trade, business, industry	29

## KIRMES

30

## CAR SYSTEM

31

## CAR SYSTEM DIGITAL

31

## ANLAGENBAU

32 – 36







Modern cult vehicle - the VW ID. Buzz combines iconic design with pioneering electromobility for authentic scenes in the model world.

P. 31







### Symbolism

#### Track gauge

 H0 1:87 | 16,5 mm  
 TT 1:120 | 12 mm

 N 1:160 | 9 mm  
 Z 1:220 | 6,5 mm

#### Periods

 Epoch I 1880 – 1920  Epoch IV 1978 – 1985  
 Epoch II 1921 – 1945  Epoch V 1986 – 2006  
 Epoch III 1946 – 1977  Epoch VI 2007 – today

**For 80 years, FALLER has stood for innovative strength, quality awareness and a passion for tinkering. In 2026, we will celebrate this anniversary where every detail has been created since 1946: in Gütenbach – our location in the heart of the Black Forest.**



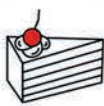
**25. – 26.09.2026**

In September, we are bringing the anniversary celebrations right into the village and creating a special place for model building fans, customers and partners: to discover, experience and raise a glass together to **80 years of FALLER.**

**Look forward to an extraordinary year of model building!**



**Community  
Networking**



**Promotions/  
Competitions**



**Exclusive  
insights**



**Product  
highlights**



**80 years of FALLER – The art of model making, rooted in the Black Forest**



# Experience FALLER live

At the 2026 trade fairs and at our anniversary celebration in Gütenbach!

Visit us at our FALLER trade fair stand or directly at our location in Gütenbach for the big anniversary celebration. Meet us in person, exchange ideas with us and discover our latest innovations and fascinating new layouts. Look forward to exciting impressions, inspiring conversations and an unforgettable live experience!



**On traXS, Utrecht, Netherlands**  
20 - 22 March 2026  
[spoorwegmuseum.nl/en](https://spoorwegmuseum.nl/en)



**Intermodellbau, Dortmund**  
16 - 19 April 2026  
[intermodellbau.de/en-gb](https://intermodellbau.de/en-gb)



**80 Years of FALLER – Anniversary celebration, Gütenbach**  
25 - 26 September 2026  
[faller.de/en](https://faller.de/en)



**Hobby fair, Leipzig**  
2 - 4 October 2026  
[hobbymesse.de/en](https://hobbymesse.de/en)



**Faszination Modellbau, Friedrichshafen**  
30 October - 1 November 2026  
[faszination-modellbau.de/en](https://faszination-modellbau.de/en)



## The art of modelling, rooted in the Black Forest

On the occasion of our 80th anniversary, our home - the Black Forest - is taking centre stage in our model world. What has always inspired us becomes impressively visible in this special year:

The art of modelling, rooted in the Black Forest!

Four detailed models in H0 scale, three models in N scale and an exclusive model in Z scale are being released to match - all inspired by the unique atmosphere and architecture of the Black Forest.

Each model tells a piece of local history and reflects what we stand for: Precision, authenticity and a love of detail - from the Black Forest, for modellers all over the world.

**P. 14-15, 26-28**

**Free  
admission!**

## Model Making Exhibition and Shop FALLER Miniature Worlds

Showcase, display window, visitor card of Gebr. FALLER GmbH – Your shopping experience in the Black Forest. In the FALLER shop at the company's headquarters in Gütenbach, we warmly invite all model making enthusiasts to look and marvel, browse and buy – with first-class advice included, of course. We look forward to your visit!

**Opening hours:** We – Fr: 11 am – 4 pm | Sa: 11 am – 3 pm. Open throughout the year. Except on German public holidays. Free admission.

Gebr. FALLER GmbH · Kreuzstraße 9 · 78148 Gütenbach · Germany





# FALLER Workshops 2026

Creative modelling experiences for beginners and professionals  
Experience the fascination of model making up close!  
In our FALLER workshops you can expand your skills, try out new techniques and exchange ideas with other modelling enthusiasts.



## Model building workshop

Experience how an impressive model layout is created from individual components - step by step. Our experienced model builders will show you how to

realise your dream of your own diorama or a complete layout: from the substructure to landscaping and water design to realistic ageing (patination) of models. The workshops will cover a variety of topics - from the basics to more in-depth topics. With lots of tips and practical examples, you can bring your modelling ideas to life.

06 - 08 March 2026

Topic: Railway line crosses stream

20 - 22 March 2026

Theme: Lost places

26 - 27 June 2026

Topic: Patinating castles and old walls

15 - 17 October 2026

Topic: Plant construction basics

06 - 08 November 2026

Topic: Loading at the stopping point

20 - 21 November 2026

Topic: Patination with a focus on heavy industry

04 - 06 December 2026

Topic: Winter



## Car System

Discover how realistic road construction is created - from vehicle technology and control modules to perfect traffic planning. This is how you create detailed road layouts and dynamic traffic scenes.

13 - 15 March 2026

Topic: Car System basics

27 - 29 November 2026

Topic: Car System basics



## Car System Digital

In this seminar, you will learn about all the special features of digital vehicles and their interaction with the Car System Digital hardware and software.

You will learn the differences between the Car System and the Car System Digital, how ultrasonic localisation works, how communication takes place via radio and how the control system is structured.

No question is left unanswered - everything is explained in a practical way and made directly tangible.

27 - 28 March 2026

Topic: Car System Digital Basics



## Car System Digital »Vehicle conversion«

Over the course of two days, you will learn everything you need in theory and practice to convert a conventional, analogue Car System vehicle to Car System Digital operation.

After the conversion, your model vehicle will have numerous new digital functions and open up completely new possibilities for driving.

01 - 02 April 2026

Topic: Vehicle conversion

16 - 17 November 2026

Topic: NEW - Vehicle conversion with small circuit board

The number of participants is limited.

Further information at: [faller.de/en/workshops](https://faller.de/en/workshops)



# The blast furnace – our anniversary model.

A model with big ideas.

A model that carries history.

A model that we are turning  
into reality thanks to you.

## The history of the Meiderich steelworks

**1901**

### **Foundation & construction**

Founded by August Thyssen, first blast furnace blown in 1903 - start of pig iron production.

**1912**

### **Expansion & operation**

All five blast furnaces are running - the plant becomes a centre of industrial strength.

**1930**

### **Interwar period & Second World War**

World economic crisis reduces production, air raids damage the plant - reconstruction after the war.

**1950**

### **Post-war period & modernisation**

New blast furnaces, modernised facilities - the plant experiences a renewed upswing.

**1985**

### **Decommissioning**

The last blast furnace is shut down - the plant ends its industrial utilisation.

**1988**

### **Redesigned as a landscape park**

The Duisburg-Nord Landscape Park is created as part of the IBA and the site is opened to the public.





130026

# Blast furnace with casting hall

For our 2026 anniversary model, we are bringing industrial history to life! We took our inspiration from the Meiderich steelworks in Duisburg, founded by August Thyssen at the beginning of the 20th century. Pig iron was produced there for decades - until the last of five blast furnaces went out in 1985. The model recreates the plant's legendary blast furnace 2 and brings the coal and steel industry into the model world. A technically and historically fascinating theme that deliberately goes far beyond our regular new products to mark our 80th anniversary. At the same time, we are building a bridge to another historical milestone: 75 years of the European Coal and Steel Community. The European Coal and Steel Community, the nucleus of today's EU, once opened up duty-free access to coal and steel - and thus paved the way for economic unification and lasting peace in Europe. A model with history, vision and weight - for collectors, history and technology enthusiasts and anyone looking for a challenge!

The model includes the blast furnace with revolving frame, the inclined lift with winch house, a dust collector, the Y-pipe with associated pipes, a gas flare, the casting hall with gantry crane and a small day bunker.

**Epoch III** • 695 x 450 x 545 mm • 10/26



ANNIVERSARY  
MODEL  
2026

5

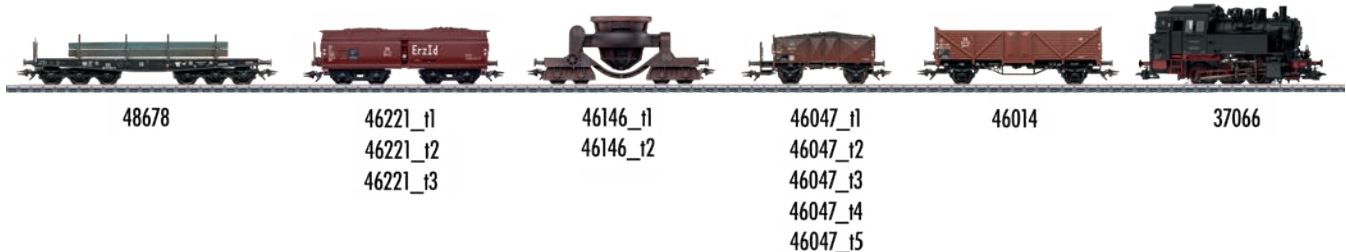


In addition to the blast furnace with casting hall (item 130026), you will find a selection of matching items in the Märklin assortment:

- 37066** Class 80 steam locomotive
- 46014** Omm 37 open high side car
- 46047** Coal Car Set
- 46146** Set of slag wagons
- 46221** Self-unloading wagon set ore 1d
- 48678** Heavy-duty flat wagon SSym 46

More information at: [maerklin.de/en](https://maerklin.de/en)

**märklin**







130025

## 3 Hot blast stoves

This miniature model depicts three hot blast stoves, which play a central role in the ironworks: They ensure that glowing hot air flows through the hot blast ring pipes into the blast furnace and that the iron oxide can be turned into molten pig iron. The model is precisely modelled on the Meiderich blast furnace and adds another fascinating technical detail.

**Epoch III** • 354 x 141 x 354 mm • 05/26



130024

## Blower hall with pipework

This detailed blower hall with its pipework brings an industrial atmosphere to the model railway - perfectly matched to the blast furnace model. The so-called blast furnace wind - the hot air that was essential for the smelting process in the blast furnace - was generated here with huge fans. The air flowed through an intricate network of wind pipes to the hot blast stoves, where it was heated to high temperatures. Can be ideally combined with the pipework set (Art. 180327) to depict the industrial character even more authentically.

**Epoch III** • 256 x 190 x 210 mm • 04/26



130023

## Gas cleaning

This miniature model of a brick building with elevated tank and elaborate pipework forms a central element of blast furnace gas cleaning in steelworks in reality. The industrial scenery can be extended even further with the separately available pipework set (Art. 180328) - for a realistic overall picture in steelworks operations. The model is coordinated with the model of the Meiderich blast furnace.

**Epoch III** • Building: 202 x 115 x 121 mm • High tank: Ø 65 x 171 mm • Pipe diameter: 22 mm • 05/26



130083

## Water treatment plant

Water treatment in industrial style! Ideal for any realistically designed industrial plant. The water treatment plant is a harmonious addition to blast furnaces and other industrial buildings. Can be flexibly extended with the pipework set (Art. 180331) - for even more authenticity on a miniature scale.

**Epoch III** • 284 x 133 x 75 mm • 05/26



7



120293

## Gantry crane

Inspired by the gantry crane of the Meiderich steelworks, which will celebrate its 100th anniversary in 2025, this model brings a piece of heavy industry to the layout. The design allows construction in four lengths - from 528 to 798 mm - and makes the crane versatile. Ideal for industrial sites to create an authentic atmosphere.

**Epoch III** • 528 - 798 x 243 x 228 mm • Clearance height: 136 mm



180326

## Circular clarifier

**Epoch III** • Ø 142 x 31 mm



131337

## Boiler-house

**Epoch I** • 188 x 120 x 180 mm



131336

## Smoke stack

**Epoch I** • Ø 34 x 254 mm



131338

## 2 Storage tanks

**Epoch III** • 113 x 99 x 60 mm



131335

## Town gas cylinder

**Epoch I** • 137 x 125 x 117 mm





110147

## »Reichenweier« Railway station set

This city railway station with its characteristic high doors on the platform side is reminiscent of typical station buildings in France or Italy. It is complemented by a matching extension that can extend the station to the right or left. This extension can also be used independently if required - for example as a small stopping point. The ensemble also includes an open, covered waiting shelter that can be used flexibly and is equally suitable as a bus or tram shelter.

**Epoch III** • Railway station: 209 x 108 x 118 mm • Outbuilding: 150 x 93 x 72 mm • Stop: 119 x 52 x 51 mm • 04/26

120090

## »Bergheim« Signal box

Control centre in miniature format - this signal box is used in reality to set points, switch signals and bring traffic to life. The model is based on a French prototype and impresses with its slender construction on filigree supports. The raised design allows it to be placed between the tracks. A detailed interior is included and completes the model.

**Epoch II** • Patinated model • 242 x 68 x 127 mm • 01/26



180002

## 2 Spindle jacks

With these two spindle jacks, wagons can be effortlessly jacked up for maintenance - making repairs and maintenance work child's play for the miniature workers!

**Epoch II** • 88 x 20 x 40 mm (2 x) • 03/26



120323

## 2 Spindle jacks with jacked-up wagon

The rust-red goods wagon (stationary model without couplings) lends authentic workshop charm to any layout. The scene is realistically and atmospherically completed with accurately reproduced spindle jacks for the maintenance and repair of railway vehicles.

**Epoch II** • Spindle lifting jacks: 88 x 20 x 40 mm (2 x) • Wagon: 35 x 50 mm, LÜP: 155 mm • 02/26





130674

## North German thatched house

Modern remodelling of a historic model of a Low German hall house - a symbol of rural life in northern Germany since the 13th century. The half-timbered building with brown-red brick walls and a large window front at the rear represents a modern interpretation of the traditional hall house.

**Epoch V** • Patinated model •

150 x 124 x 96 mm • 03/26

9



180398

## Privacy fence

Finely crafted privacy fencing in light and dark grey, ideal for the realistic design of gardens, front gardens and house borders. Whether modern or classic - they blend discreetly into any scene.

**Epoch V** • 03/26



180011

## 5 Bundles of wood

Five light-coloured bundles of wood, carefully tied together - perfect for modelling forest edges, timber yards or craft workshops. Whether freshly cut firewood or prepared building material: these small details bring the modelling world to life.

03/26



180010

## 30 Bags, stacked

Tidiness is a must! Five realistically modelled stacks of bright fabric sacks are ideal for decorating storage rooms, goods halls or rural scenes. Whether grain, flour or other bulk goods - these small details liven up the modelling world.

03/26



180012

## 3 Car trailers

Three car trailers in different colours - perfect for designing loading or parking spaces.

04/26



180013

## Summit cross

A little piece of jewellery on the summit! A lovingly designed summit cross in a warm wooden look, decorated with fine metal accents.

03/26





130148

## »Solino« Pizzeria

This model was based on the film Solino (2002) with Moritz Bleibtreu. The story tells of Romano and Rosa Amato, who emigrate to Duisburg with their sons Gigi and Giancarlo in 1964 - lured by the economic miracle and the hope of a better life. There they open a pizzeria, which they name after their home village of Solino. The model tells the story of this family and brings a piece of German film culture to the model layout - rich in detail and full of character.

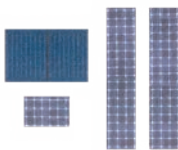
**Epoch III** • 250 x 205 x 225 mm • 02/26

130755

## Apartment block

A bright apartment building with four cosy residential units brings urban flair to the model landscape. Each flat has its own French balcony, while the Eternit roof and the covered staircase entrance round off the typical image of modern rows of flats in suburbs and smaller towns.

**Epoch IV** • 158 x 134 x 133 mm • 06/26



180014

## Photovoltaic system

Sustainability in miniature format: Small solar cells (without function) for model house roofs, ideal for integrating modern technology into the miniature world.

02/26

XX/26 Month of delivery



180015

## 2 Garden barbecues

Two brown garden barbecues and wooden waste bins to ring in the modelling summer and create detailed barbecue areas and gardens.

05/26

# Faller-Classics

GENUINE COLLECTOR'S ITEMS – REISSUED!

11

**109928**

## B-928 Modern bank building

Pure modelling nostalgia! The multi-storey model building presents itself in a simple, modern style. On the ground floor there is a bank branch with a grey façade, above which, slightly offset, are residential floors in white and red. Coloured curtains in the windows set subtle accents and lighten up the overall picture. As a special extra, the kit comes with a reprint of FALLER magazine no. 52. A real highlight for collectors and fans of classic FALLER models!

**Epoch III** • 186 x 113 x 86 mm • 05/26

**109160**

## B-160 City fountain

A raised water feature on a reddish-brown stone foundation, attached to a small beige building with a staircase at the side and seating on the flat roof. The kit can be operated with the water pump (Art. 180627 - not included) and comes with a reprint of FALLER magazine no. 27. A real must-have for collectors of FALLER classics!

**Epoch III** • 186 x 113 x 86 mm • 05/26





130830

## »Bellevue« Hunting lodge

This beautiful castle model impresses with its majestic grand staircase, ornate decorations, striking tower and elegant yellow façade. Inspired by baroque residences of the 17th and 18th centuries, it embodies all the beauty and power of this era. The Baroque era was characterised by power and the artistic staging of emotions. Palaces such as Versailles and Ludwigsburg embody these values to this day. Strict symmetry, magnificent architecture and overwhelming spatial effects characterised the image of that time. This model picks up on this spirit and brings a piece of royal architecture to the model layout.

**Epoch I** • 540 x 368 x 368 mm • 04/26



130129

## Castle garden fountain

Enchanting castle fountain in historical style, crowned by a rider on a rising horse, reminiscent of times gone by. It adds a lovely accent and elegantly embellishes any castle garden or park. The fountain can be easily operated with the water pump (Art. 180627 - not included), making it the lively centrepiece of the garden.

**Epoch I** • 102 x 99 x 60 mm • 03/26



13



180393

## Stagecoach

This detailed stagecoach in elegant black with bright yellow accents brings the charm of past centuries to the world of modelling. Whether on dusty country roads or in front of the post office, it tells of journeys, stories and the sound of galloping miniature hooves (without figures).

**Epoch I** • 74 x 23 x 33 mm • 03/26



180379

## Maze

An enchanted hedge maze for magnificent castle gardens, historical parks or imaginative scenes. The dark green hedges wind their way through winding paths and invite the miniature inhabitants to get lost. Includes matching scattering material for the ground design for a harmonious overall look.

200 x 200 mm • 04/26







To mark our 80th anniversary, our home region - the Black Forest - will be the focus of our modelling world. What has always inspired us will be particularly visible for one year:  
**the art of modelling, rooted in the Black Forest!**



14



130010

## »Black Forest house with figure« Anniversary model

I come from deep in the forest! This dark Black Forest farmhouse brings the typical charm of the region directly to the model landscape. Green colour elements on the balcony railings, light wood accents and numerous lovely details make it an eye-catcher on the layout. The low-pitched roof is an unmistakable feature of traditional Black Forest architecture and gives the model its characteristic charm. A matching figure in Black Forest costume and Bollenhut hat breathes additional life into the ensemble. Perfect for atmospherically decorating dark coniferous forests and idyllic countryside scenes.

**Epoch I** • Patinated model • 125 x 125 x 87 mm • 05/26



130011

## »1st world's largest cuckoo clock with figure« Anniversary model

This detailed model was modelled on the world's largest cuckoo clock in the Black Forest. The original was created in the Untertal valley in Schonach, where master clockmaker Josef Dold and his family spent two years creating a unique piece of work - made entirely of wood and with a clockwork of gigantic proportions.

The model captures the special charm of this extraordinary sight: lovingly designed details, craftsmanship and a typical Black Forest tradition. Including a figurine in Black Forest costume and a Bollenhut hat, which gives the whole thing additional character. A piece of the Black Forest for your home - inspired by the largest cuckoo clock in the world. The model is equipped with a real-time clock. Required AA battery not included. The water wheel and the wood chipper can be powered by the »Synchronous hobby motor«, Art. 180629, 12-16 V AC voltage. Motor not included.

**Epoch I** • Patinated model • 152 x 130 x 102 mm • 04/26





130012

## »Clockmaker's house with figure« Anniversary model

A charming, dark Black Forest house, as you would find in the heights of the Black Forest. Flower boxes in bright colours adorn the façade and give the building a homely feel. Thanks to its discreet size, the house blends perfectly into meadow and forest landscapes and is ideal for the background of the layout. Including figure, a clock carrier - a small piece of Black Forest tradition for every modelling world.

**Epoch I** Patinated model  
165 x 110 x 113 mm 05/26



15



130013

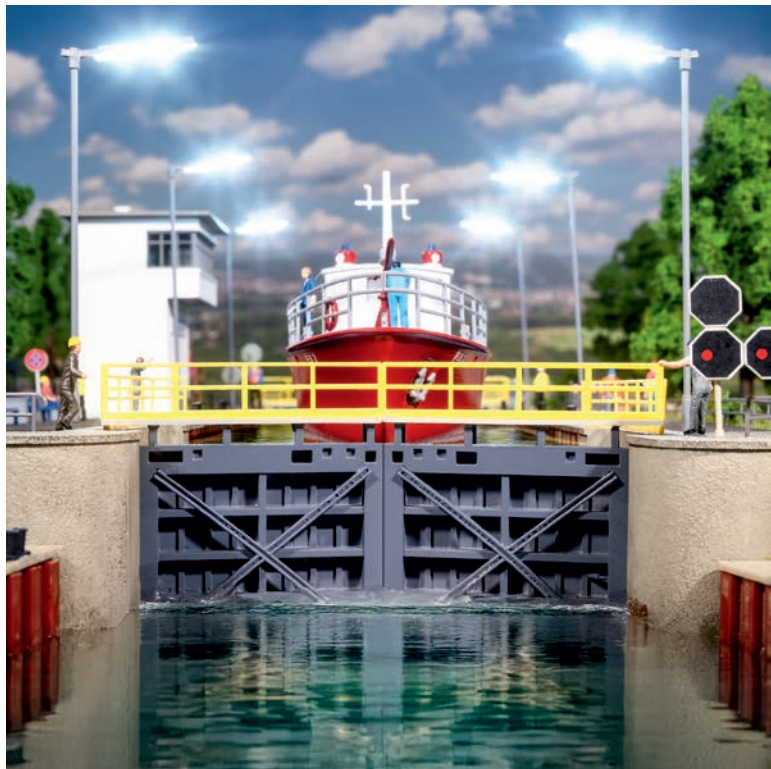
## »Black Forest farm with 2 figures« Anniversary model

A real landmark from the region! A stately Black Forest farmhouse with a stone basement, high driveway, wooden balcony and thatched and shingled roof. Two dancing figures in traditional costume bring the farmyard and the model world to life. Perfect for spicing up the forest landscape and adding a touch of rural tradition to the layout.

**Epoch I** Patinated model 230 x 220 x 145 mm 06/26







180325

## Lock

This detailed model of a lock with associated lock keeper's house enriches any model layout. The lock is equipped with two doors through which ships can enter and exit and has a lock chamber with moulded walls. The solid doors are set into robust concrete foundations. The control building impresses with white plaster and a modern flat roof. For even more realism, the model can be extended with the quay wall (Art. 131010) and the fire boat (item 131016) can also be placed here. A convincing ensemble for all those who want to bring their ship and harbour facilities to life.

**Epoch IV** • Building: 92 x 60 x 93 mm • Lock: 460 x 162 x 68 mm • 04/26



182057

## 20' Container, set of 5

**Epoch VI** • 69 x 28 x 30 mm (5 x) • 05/26



182006

## 20' Container »K-LINE« and »P&O«

**Epoch V** • 69 x 28 x 30 mm (2 x) • 05/26

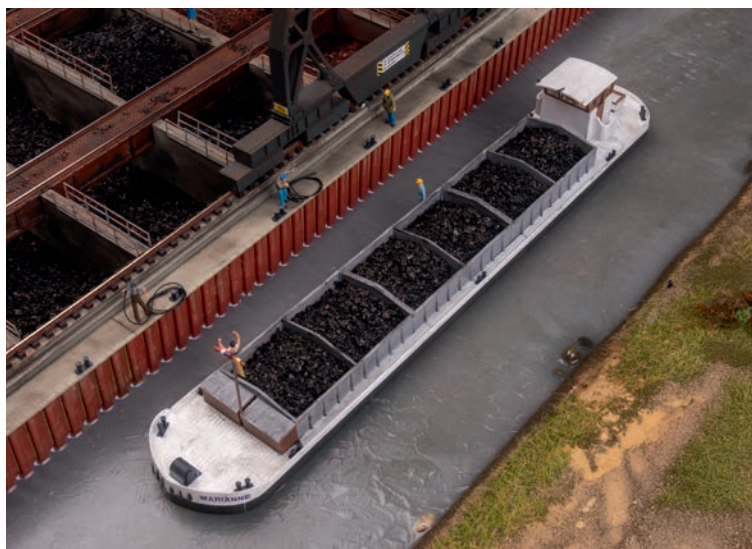


180009

## Harbour accessories

Small details for harbours and ships: Two paddles, an anchor, 12 wooden cleats and much more to bring your model harbour to life!

02/26

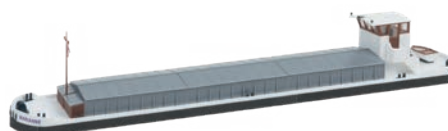


131018

## River freighter

A white model ship brings the world of inland shipping to the layout. With its neat wheelhouse, flattened hull and generous storage space in the central container, it is ready to take the miniature cargo on board. The model is designed as a waterline version and is not floatable.

**Epoch IV** • 359 x 60 x 52 mm • 04/26



17



131019

## Police boat

Compact, manoeuvrable and always ready! The model of the small blue police boat (waterline model - not floatable) is primarily designed for use on inland waterways and rivers. With its pointed hull and white-painted wheelhouse - clearly labelled »Police« - it is ready for its next mission. The generous loading area offers space for various equipment and a matching red lifeboat is included.

**Epoch IV** • 254 x 57 x 74 mm • 02/26



131016

## Fire boat

Compact and manoeuvrable - always ready! The model of the small red fireboat (waterline model - not floatable) is primarily designed for use on inland waterways and rivers.

With its pointed hull and white-painted wheelhouse - clearly labelled »Fire brigade« - it sails to its next mission. The generous loading area offers space for various fire-fighting equipment and a matching red lifeboat is included.

**Epoch IV** • 254 x 57 x 74 mm





# Monthly models

Exclusive special models and authentic re-issues in limited quantities: 12 times a year FALLER addresses all passionate modellers who are looking for something special with its coveted monthly articles. It pays to be quick here!

Model of the month  
**January**



191837

Two-family house

**Epoch IV** • Garage: 67 x 41 x 37 mm •  
House: 155 x 125 x 145 mm • 01/26

Model of the month  
**February**



191762

Bell foundry

**Epoch II** • 240 x 170 x 167 mm • 02/26

Model of the month  
**March**

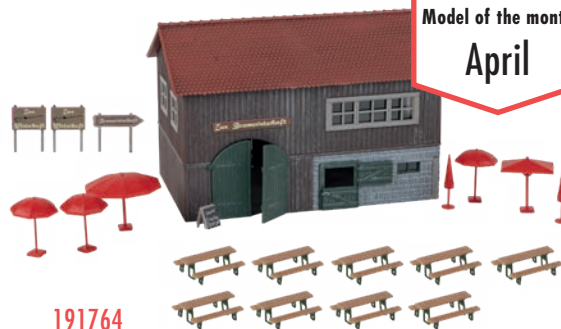


191838

Tank farm

**Epoch III** • 116 x 100 x 57 mm • 03/26

Model of the month  
**April**



191764

Seasonal wine tavern

**Epoch III** • Patinated model •  
160 x 96 x 100 mm • 04/26

Model of the month  
**May**



191839

House »Alpina«

**Epoch II** • 115 x 115 x 102 mm • 05/26

Model of the month  
**June**



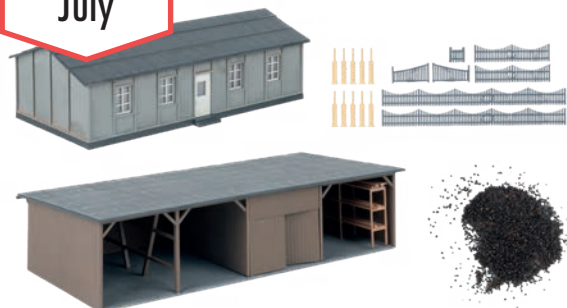
191841

Storage shed with conveyor belt

**Epoch IV** • Conveyor belt: 199 x 60 x 65 mm •  
Storage shed: 172 x 95 x 71 mm • 06/26

Model of the month

July



191842

## Barrack with coal shed

Epoch II • Barrack: 150 x 72 x 52 mm •  
Shed: 188 x 92 x 44 mm • 07/26

Model of the month

August



191843

## Petrol station with car wash

Epoch III • Petrol station: 100 x 95 x 49 mm •  
Car wash: 85 x 65 x 39 mm •  
Petrol pumps: 84 x 45 x 50 mm • 08/26

Model of the month

September



191730

## »St. Niklaus« Station

Epoch II • Patinated model • 310 x 127 x 120 mm • 09/26

Model of the month

October



191844

## »Halloween« Carousel

Epoch V • 240 x 145 x 100 mm • 10/26

Model of the month

November



191845

## »INTERSPORT« Ski shop

Epoch V • 177 x 155 x 127 mm • 11/26

Model of the month

December



191846

## Forester's lodge

Epoch I • Patinated model •  
138 x 120 x 110 mm • 12/26





151722

**Paramedic**

01/26



151724

**Lifeguard**

01/26



151733

**Bathers**

01/26



151726

**Criminal**

151727

**Persons descending stairs**

01/26



**151732****Après-ski revellers**

01/26



21

**151736****Stand-Up Paddler**

01/26

**151745****Walkers with dogs**

01/26

**151746****Horse and rider**

01/26

**151931****Wild birds**

01/26







212129

## »Steinbach« Railway station

Small, charming railway station with toilet block and wooden extension. Perfect for equipping a small town with a railway station. The kit consists of a material mix of plastic and wood/special cardboard.

**Epoch III** • 241 x 87 x 86 mm • 03/26



232134

## Aumühle with mill wheel

The mill wheel turns at a leisurely pace and fills the air with a gentle rippling sound as it grinds diligently inside. This charming Aumühle mill in light brown with bright red half-timbering lends a fitting atmosphere to any village or old town landscape.

**Epoch I** • 146 x 112 x 114 mm • 05/26



232121

## Sawmill

This lovingly designed sawmill impresses with numerous fine details and an authentic rustic appearance. The water wheel can be driven by installing the motor (Art. 180629), whereby installation is only possible during assembly of the kit. Please note: The motor is not included in the scope of delivery.

**Epoch II** • Moveable model • 220 x 130 x 90 mm • 06/26



232135

## Windmill

The white and red wings of this lovingly designed windmill with thatched roof and brick base quietly - a charming eye-catcher for any model landscape. The wings of this model can be realistically moved by installing the motor (Art. 180722, max. 5 V, DC voltage). The motor can only be installed at the same time as the kit is assembled. Motor not included.

**Epoch I** • Moveable model • Patinated model •  
133 x 90 x 168 mm • 02/26



23



232131

## Hunter's lodge and mountain inn

This charming wooden hunter's lodge with green shutters peeps out picturesquely from behind the trees. In the immediate vicinity is the lovingly designed inn with a terrace where miniature visitors can enjoy a cosy chat. Together, the two models form a harmonious ensemble for forest and village settings.

**Epoch II** • Hunter's Lodge: 71 x 51 x 34 mm •  
Inn: 110 x 54 x 45,5 mm • 05/26



232138

## Inn »Zur Post« with beer garden

This charming inn with its stone foundation and half-timbering invites miniature visitors to linger in its spacious outdoor area. It exudes rustic, rural charm and adds a lovingly designed detail to any village setting.

**Epoch III** • 152 x 109 x 70 mm • 05/26





232147

## Detached house

Modern detached house with grey-brown façade elements, conservatory, patio roof and fine etched railings. Particularly easy to build thanks to the well thought-out design - ideal for beginners too.

**Epoch V** • 64 x 63 x 50 mm • 04/26



232152

## »ModernLife« WeberHaus

A model house in a modern, sleek design with a white façade, warm orange tiled roof and striking black window frames. Perfect for creating a modern suburb or a luxurious residential neighbourhood.

**Epoch VI** • 90 x 70 x 50 mm • 04/26

# Faller Classics

GENUINE COLLECTOR'S ITEMS – REISSUED!



202226

## 2226 Café Restaurant

Painted in fresh mint green and decorated with red shutters, the colourful café invites miniature visitors to linger in comfort. The tapered balcony and the round, attached pavilion give the building a special charm and make it a lively meeting place in any miniature town or village. The kit also includes a reprint of a FALLER magazine - a must for all collectors!

**Epoch III** • 142 x 81 x 67 mm • 05/26

Model of the month  
**February**



231730

## »Siena« House

Epoch IV • 85 x 81 x 68 mm • 02/26

Model of the month  
**May**



231731

## »Mühlheim« Railway station

Epoch III • 320 x 124 x 74 mm • 05/26

Model of the month  
**September**



231732

## Locomotive workshop

Epoch III • 154 x 109 x 160 mm • 09/26

Model of the month  
**November**



231733

## »DHL« Logistics centre with figures

Epoch VI • 222,5 x 122 x 76 mm • 11/26



155623

## Police officers

01/26



272545

## Paving slab set

Set of pavement slabs and matching kerbstones for the realistic and detailed design of roadsides in the model.

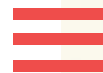
04/26







To mark our 80th anniversary, our home region - the Black Forest - will be the focus of our modelling world. What has always inspired us will be particularly visible for one year:  
**the art of modelling, rooted in the Black Forest!**



232010

## »Black Forest farm with 2 figures« Anniversary model



The landmark from the region: a stately Black Forest farmhouse with warm timber framing, brick basement, high driveway and thatched and shingled roof. Fences and carts are included for customising the outdoor area. Two dancing figures in traditional costume bring the farmyard and the model world to life!

**Epoch I** • Patinated model •

148 x 153 x 90 mm •

05/26



232011

## »Clockmaker's house with figure« Anniversary model



A charming, dark Black Forest house, as you would find in the heights of the Black Forest. Thanks to its discreet size, the house blends perfectly into meadow and forest landscapes and is ideal for the background of the layout. Figure included - a small piece of Black Forest tradition for every modelling world.

**Epoch I** • Patinated model • 91 x 57 x 57 mm • 04/26







232012

## »Öhlermill with figure« Anniversary model

A true original! This Black Forest flour mill is idyllically situated in the Jostal valley near Titisee-Neustadt. It was built in 1772 and is still owned by the family today. The mill is driven by a water wheel on the upper beater, has a grinder with a stone entrance and all the prerequisites for pressing oil or grinding grain. In addition to the mill, the building has an additional living area. A figure in traditional costume brings the mill to life. The model can also be powered with the tinker motor (Art. 180629), but this is not included.

**Epoch I** Moveable model Patinated model  
111 x 75 x 75 mm 06/26







282784

## Anniversary model »Black Forest farm«

A small Black Forest farmhouse in a warm wooden look with half-timbered elements and a solid stone foundation peeps out between the dark conifers and lends the landscape its picturesque and unmistakable charm. The low-pitched single roof and the surrounding balconies on two sides make it a landmark of the Black Forest.

**Epoch I** Lasercut model  
113 x 80 x 63 mm 04/26







282701

## »Rathenow« City railway station

This model captures the charm of the turn of the century: a light turquoise roof, light yellow stone façade and a glazed platform roof on the railway side give the station character. The clear clinker brick construction and loving details make it an atmospheric centrepiece of any layout. The model is architecturally independent and bears no relation to the original railway station in Rathenow (Brandenburg).

**Epoch I** • 199 x 85 x 61 mm • 02/26

29



282756

## Sawmill and watermill

Rustic and made of wood, the model of a sawmill with watermill conveys the typical atmosphere of an old craft business. Numerous detailed devices and tools provide authentic charm, while the model brings a piece of idyllic countryside to every miniature layout as a loving detail.

**Epoch I** • Lasercut model • Sawmill: 104 x 38 x 32 mm • Mill: 40 x 25 x 28 mm • 06/26





140434

## »INSIDER« Roundabout

Nostalgic funfair fun for the miniature world! This detailed model of the »Insider«, modelled on the original by showman Andreas Aigner & Söhne, is a real eye-catcher at any funfair. The original was in operation from 1994 to 2010. The model can be driven by a DC geared motor and its speed can be regulated via a circuit board. Suitable for a 5 - 12 V DC connection, it brings an authentic folk festival atmosphere to any miniature funfair.

**Epoch V** • Moveable model • incl. motor •  
 Carousel: 250 x 240 x 143 mm • Ticket booth:  
 32 x 32 x 37 mm (2x) • 05/26



## CAR SYSTEM



161422

### VW ID. Buzz, green-white (HERPA)

In fresh green and white, the VW ID. Buzz rolls along the streets of the model railway and brings modern momentum to the world of miniatures. With its charming retro design and clear, contemporary design language, it combines past and future in a special way. Whether outside a café, on country roads or in city traffic - the little electric van causes a stir wherever it goes and adds a touch of adventure and freedom to the scene.

Epoch VI - 02/26

#### Technical vehicle details:

- Microswitch for on/off
- Powerful, wear-resistant drive motor
- Solid rubber tyres for safe grip
- Steerable oscillating axle with slider and magnet
- Integrated NiMh battery
- 3-pin charging socket
- Reed contact
- Possible chargers (available separately):
  - »Storage battery charger«, Art. 161690,
  - »Car System USB charger«, Art. 161415 or
  - »Processor-controlled charging unit«, Art. 161349

#### Please note:

- Only use original FALLER materials for road construction to ensure safe operation.
- Spare parts are available from specialised dealers or directly from FALLER. Information at: [faller.de/en](https://faller.de/en)

## CAR SYSTEM DIGITAL



161322

### Car System Digital MB O 303 RHD InterRegio Bus (WIKING)

The InterRegio bus is back - as a detailed model of Deutsche Bahn's legendary long-distance bus experiment. A piece of transport history from the late 80s for your layout. Equipped with an integrated ultrasonic capsule and lovingly designed details, the Car System Digital vehicle is the ideal choice for realistic travel scenarios.

Epoch IV - 02/26



161323

### Car System Digital MB Sprinter »THW« (HERPA)

Ready for action in a small format - the THW vehicle is the most compact model in the Car System Digital. Equipped with a small ultrasonic capsule, it ensures precise navigation and realistic operations on your digital system. Perfect for demanding scenarios in modern model operation.

Epoch V - 01/26



180699

### Transformer, 75 W

Efficiency-optimised switching power supply for model building systems - compact, reliable and future-proof. With an optimised output module for a wide range of applications, it supplies 16 V AC (3.13 A), 12 V DC (3 A) and 5 V DC (3 A). Thanks to state-of-the-art technology, it fulfils the current legal requirements for energy saving in accordance with the Ecodesign Directive - for maximum efficiency and sustainability.

06/26



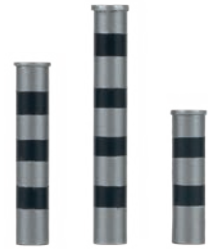


180001

### 3 Speed camera columns

Watch out, there's speeding here! These three speed cameras at different heights ensure speed checks on the model road. Miniature drivers had better take their foot off the accelerator!

**Epoch VI** • Column 1: Ø 7 x 44 mm (1x) • Column 2: Ø 7 x 35 mm (1x) • Column 3: Ø 7 x 26 mm (1x) • 02/26



182301

### »Crêpes« Sales trolley

07/26



182302

### »Grilled sausage« Sales trolley

07/26



182303

### »Pizza« Sales trolley

07/26



182304

### »Paella« Sales trolley

07/26



180743

### Modeller plate »Quarry stone«, grey

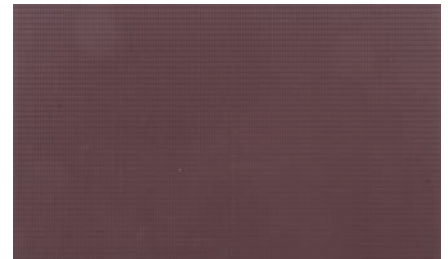
02/26



180744

### Modeller plate »Sidewalk«, dark grey

02/26



180745

### Modeller plate »Roof tiles«, red-brown

02/26



171653

## Waterfall

A thin waterfall makes its way down into the valley between the light-coloured, rugged rock faces. This detailed rock module with waterfall brings atmosphere to the model landscape and is ideal as an eye-catcher in mountain ranges, gorges or enchanted forest corners. A small natural spectacle for modelling.

05/26



171654 (H0, TT, N, Z)

## Model water, transparent

High-quality 1-component modelling water for recreating natural water surfaces such as rivers, streams, ponds, lakes or even puddles in model landscapes.

The clear acrylic dispersion is applied in layers no thicker than 2 mm, making it easy to work with. Thanks to the transparent surface, the background colour remains visible and gives the water surface an impressive depth effect. Small accessories such as stones, plants or miniature figures can also be easily moulded in - for even more realism and creative freedom in the design.

250 ml - 02/26



171655 (H0, TT, N, Z)

## Water effect

This transparent water effect gel is perfect for creating dynamic water scenes such as waterfalls, flowing streams or moving water surfaces in modelling.

The gel can be used in a variety of ways: Whether it is filled, dabbed or applied with a brush, it creates impressive 3D structures with a translucent depth effect. Ideal for realistic splash, flow or spray effects. It can be coloured individually with universal colour concentrates and adheres to many surfaces.

The gel is fully cured after 4 to 6 hours, remains waterproof and is heat-resistant - perfect for demanding modelling projects.

100 g - 02/26





171381 (H0 / TT / N)

Flower clusters, dark green

02/26



171382 (H0 / TT / N)

Flower clusters, white

02/26



171383 (H0 / TT / N)

Flower clusters, yellow

02/26



171384 (H0 / TT / N)

Flower clusters, violet

02/26



171385 (H0, TT, N)

Flower clusters, red

02/26



171386

Tufts of grass, beige

02/26



171387

Tufts of grass, dark green

02/26



171388

Tufts of grass, dry grass

02/26



171389

Large tufts of grass, beige

02/26



171390

Large tufts of grass, light green

02/26



171391

Large tufts of grass, dry grass

02/26



170211 (H0, TT, N, Z)

## Scattered fibres, grass green

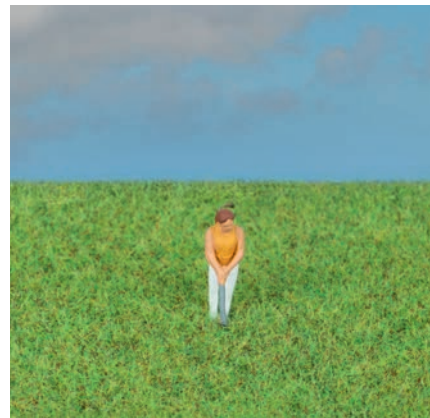
30 g • Height: 4 mm • 02/26



170212 (H0, TT, N, Z)

## Scattered fibres, grass green

80 g • Height: 4 mm • 02/26



170213 (H0, TT, N, Z)

## Scattered fibres, dark green

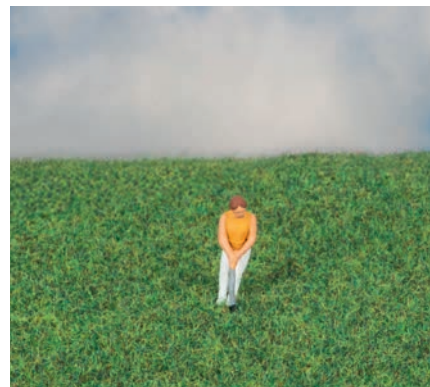
30 g • Height: 4 mm • 02/26



170214 (H0, TT, N, Z)

## Scattered fibres, dark green

80 g • Height: 4 mm • 02/26



170200 (H0, TT, N, Z)

## Litter fibres, winter grass

35 g • Height: 2-3 mm • 03/26



170306

## Gritting material, Iron ore

140 g • Grain size: 0,5 - 1,0 mm • 05/26



170307

## Gritting material, Lime

250 g • Grain size: 0,1 - 0,6 mm • 05/26



181579 (H0, TT, N)

## 4 Deciduous trees, light green

Height: 90 - 110 mm • 02/26



181544 (H0, TT, N)

## 3 Fir trees

Height: 100 mm • 03/26





181621 (H0, TT, N, Z)

## Leaf foliage, light green

280 x 140 mm • 02/26



181622 (H0, TT, N, Z)

## Leaf foliage, green

280 x 140 mm • 02/26



181623 (H0, TT, N, Z)

## Leaf foliage, dark green

280 x 140 mm • 02/26



181624 (H0, TT, N, Z)

## Leaf foliage, pine green

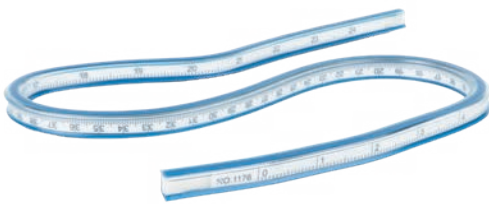
280 x 140 mm • 02/26



181625 (H0, TT, N, Z)

## Leaf foliage, may green

280 x 140 mm • 02/26



170561 (H0, TT, N, Z)

## Curve ruler

The flexible ruler can be bent effortlessly and is perfect for drawing road markings in model making. Thanks to its mouldability, curved lines and curves can also be drawn easily and precisely - making blurred markings a thing of the past.

400 mm • 06/26



170562 (H0, TT, N, Z)

## Road marking pen, white

Equipped with a fine tip, the marking pen is perfect for precise detail work. The opaque white colour makes it ideal for applying road markings on the model layout.

06/26

# Outlook for the second half of 2026

In the second half of 2026, we will continue to expand our »blast furnace« product portfolio. In autumn, you can look forward to the following new products, among others:



## »Blast furnace« Patina set

For a realistic, authentically aged look for your model.

## Large chimney

The ideal extension and perfect addition to your blast furnace system.

180721 (H0, TT, N, Z)

## »Blast furnace« Technology kit

Experience a fascinating industrial atmosphere in your model world!

### Contents:

- Pre-assembled tier lighting with 53 LEDs
- Flaring chute lighting with COB LED strip
- 2 servos for the realistic movement sequences of the tap hole drill and the tamping machine
- Power supply unit for reliable power supply
- Control unit with fixed sequence control - can also be controlled digitally for perfect staging

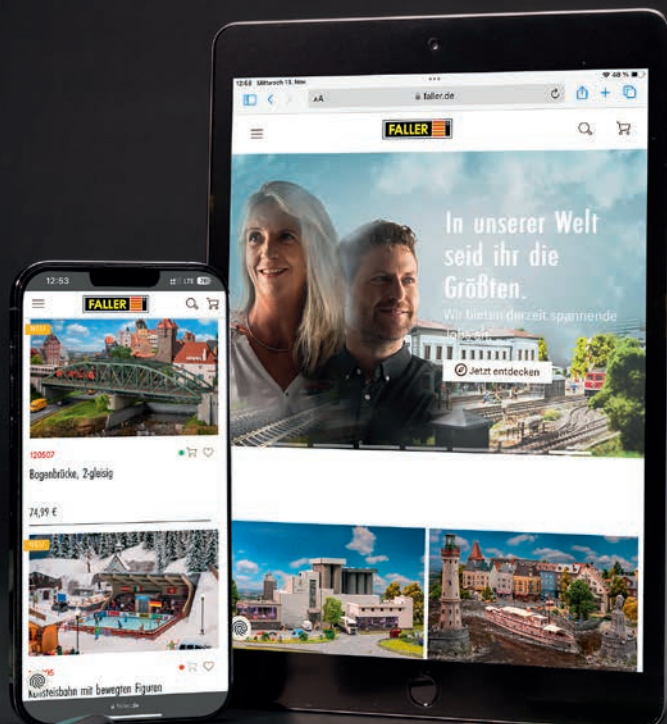
10/26

## FALLER Online Shop

Buy modelling.  
Building dreams.

Whether you are a hobbyist, professional or specialised dealer: Order from the comfort of your own home at **faller.de/en**

And if you prefer to shop in person on site you can find a specialist retailer near you here.





# FALLER Brands



## FALLER brand shop

The entire product range of Gebr. FALLER GmbH with many other brands, themes and scales awaits you in the FALLER online shop: **faller.de**

Gebr. FALLER GmbH  
Kreuzstrasse 9  
78148 Gütenbach  
Germany

Phone +49 7723 651-0  
info@faller.de

faller.de  
 faller-create.de  
 instagram.com/gebrfaller  
 facebook.com/faller.de  
 youtube.com/c/faller



Irrtümer, Preisänderungen, Liefermöglichkeiten und technische, maßliche sowie farbliche Änderungen sind vorbehalten. Maßangaben und Abbildungen ohne Gewähr. | Subject to errors, price changes, availability and modifications of technical details, dimensions and/or colours without notice. Dimensions and illustrations are not binding. | Sous réserve d'erreurs, de changements de prix, de possibilités de livraison et de modifications concernant technique, dimensions et couleurs. Indications de dimensions et illustrations sans engagement.