



DRIVERS INSTALLATION GUIDE

*** These CIU-2 drivers are for Windows Vista/Windows 7/Windows 8.1/Windows 10 use, and is not compatible with other OS.**

Windows 8 is not compatible because Microsoft support ended for Windows 8.

Please update Windows before installing CIU-2 driver software.

Downloaded ZIP extraction (decompression)	P2
Extraction (decompression) confirmation	P3
CIU-2 connection to PC	P3
CIU-2 Driver Installation (Windows Vista/Windows 7).....	P4
CIU-2 Driver Installation (Windows 8.1/Windows 10).....	P8
COM port confirmation and setting	P12

Distribution & exemption of liability

- Futaba Corporation shall not be responsible for any damage caused by use of this software without regard to legal foundation. Use this software based on agreement to this.
- The copyright of this software and document resides with Futaba Corporation. Redistribution without the approval of the copyright holder is prohibited.
- Reverse engineering and modification of this software is strictly prohibited.

*Windows is registered trademark of Microsoft Corporation.

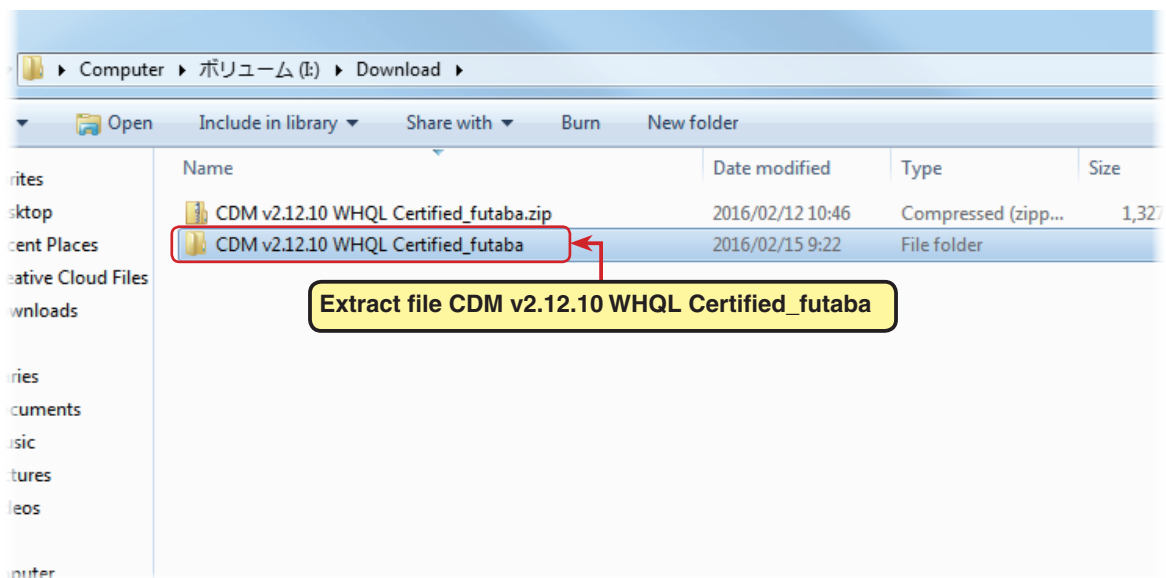
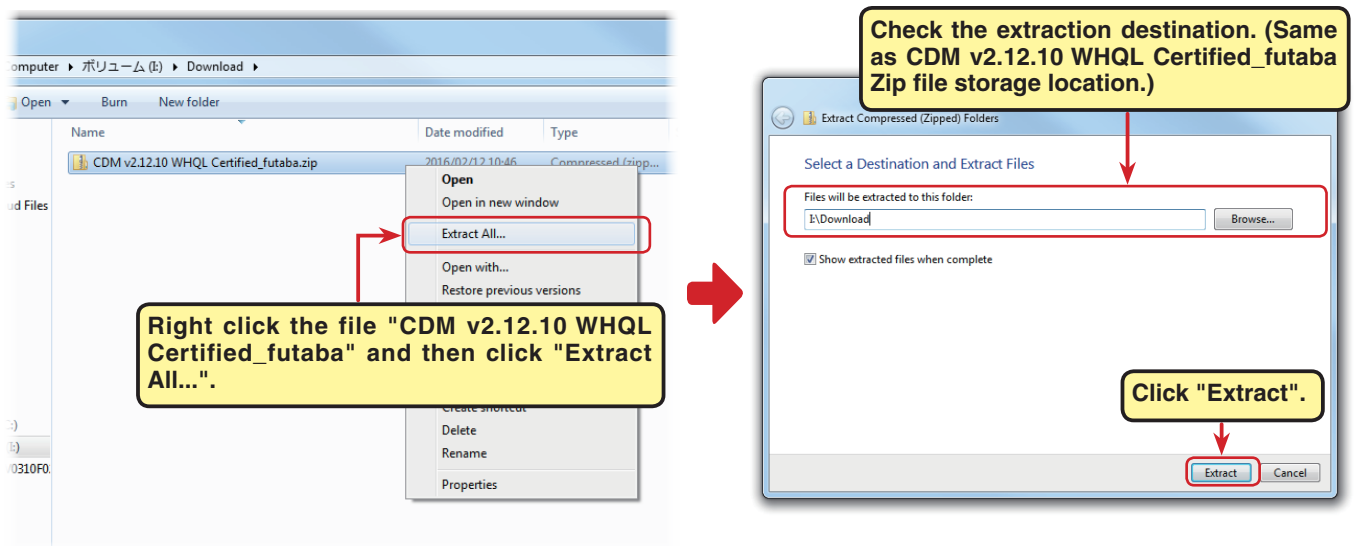
Downloaded Zip file extraction (decompression)

The downloaded driver file CDM v2.12.10 WHQL Certified_futaba is a Zip file. Extract (decompress) this file.

*Save the downloaded Zip file CDM v2.12.10 WHQL Certified_futaba because it will be used if the driver must be reinstalled for some reason.

1. Right click the file CDM v2.12.10 WHQL Certified_futaba.
2. Click "Extract all files". The Extraction Wizard launches.
3. Extract (decompress) file CDM v2.12.10 WHQL Certified_futaba to the same location as the Zip file save location in accordance with the extraction wizard's instructions.

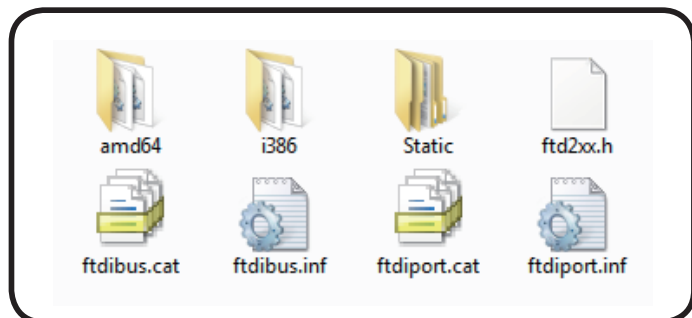
* Example: For Windows 7



Extracted (decompressed) file confirmation

Let's check the extracted (decompressed) file.

1. At the end of extraction (decompression), a folder named CDM v2.12.10 WHQL Certified_futaba like that shown below is created.
2. Double click the CDM v2.12.10 WHQL Certified_futaba folder. The contents of the folder are displayed.

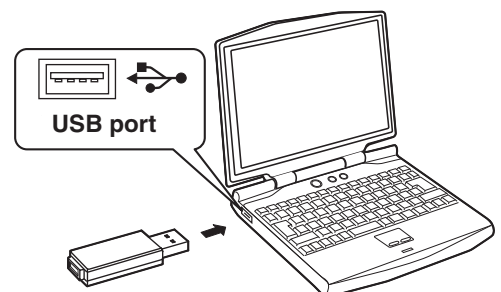


Eight files are decompressed to this folder.

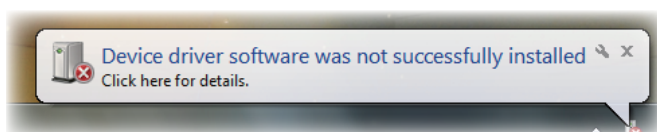
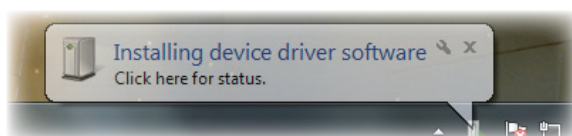
CIU-2 connection to PC

Connect your CIU-2 to the USB port of the PC.

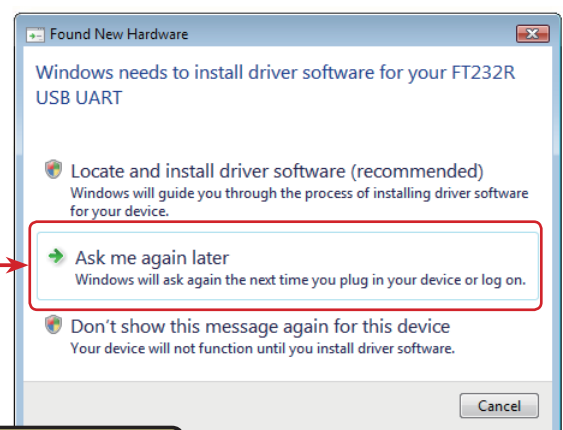
1. Turn on the PC power and boot Windows.
2. Confirm that all other applications are closed. Close all virus check and other resident programs, if any.
3. Connect the CIU-2 to the USB port of the PC.
4. The "Found New Hardware Wizard" window shown below appears on the screen.
(It is not shown in the case of Windows8.1 and Windows10.)



Windows 7



Windows Vista



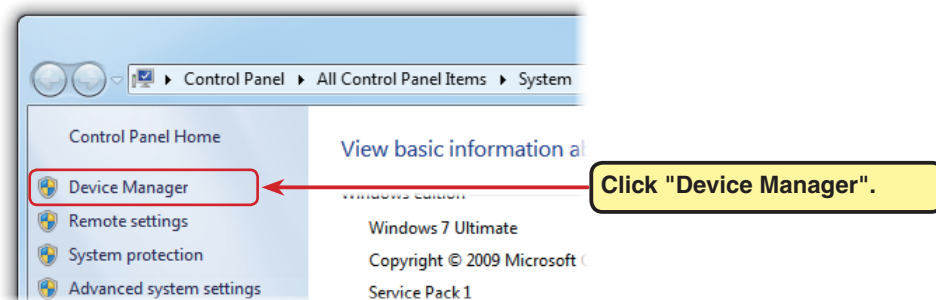
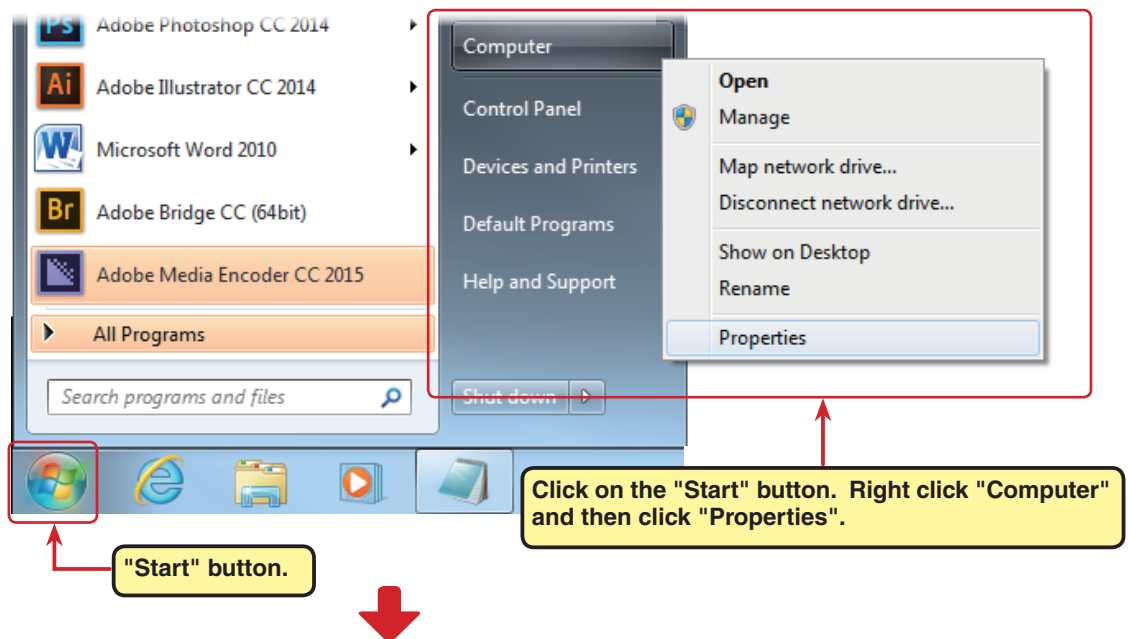
Click "Ask me again later".

5. Install the CIU-2 drivers.

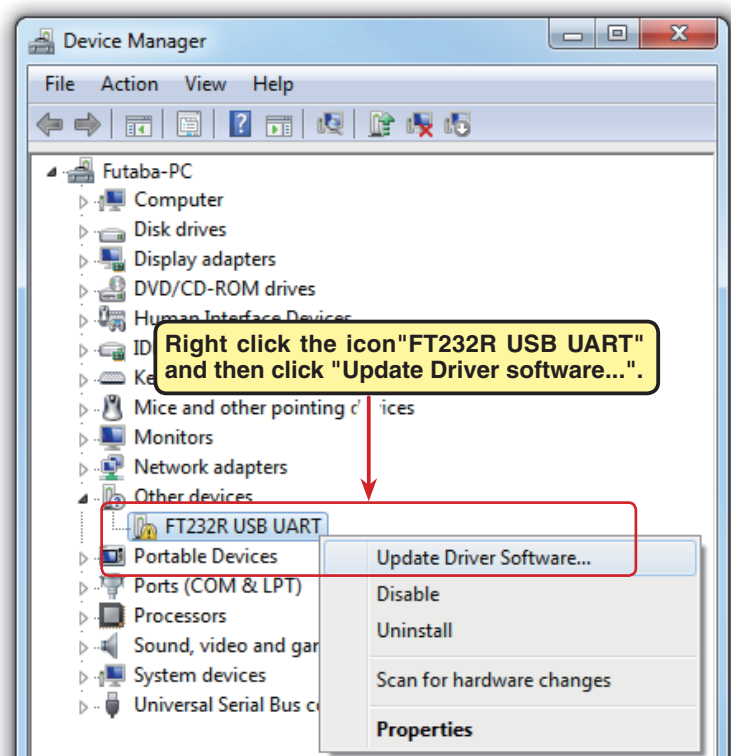
Windows Vista and Windows 7(page 4) / Windows 8.1 and Windows 10(page 8)

Driver installation (Using Windows Vista / Windows 7 as an example)

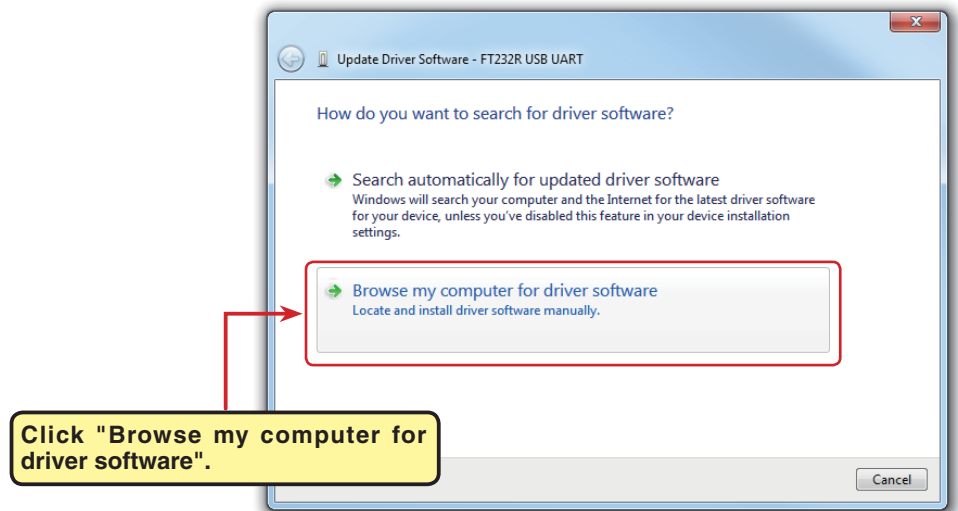
1. To open Windows Device Manager. From Windows desktop, click on the "Start" button. Right click "Computer" and then click "Properties". The Windows Device Manager appears.



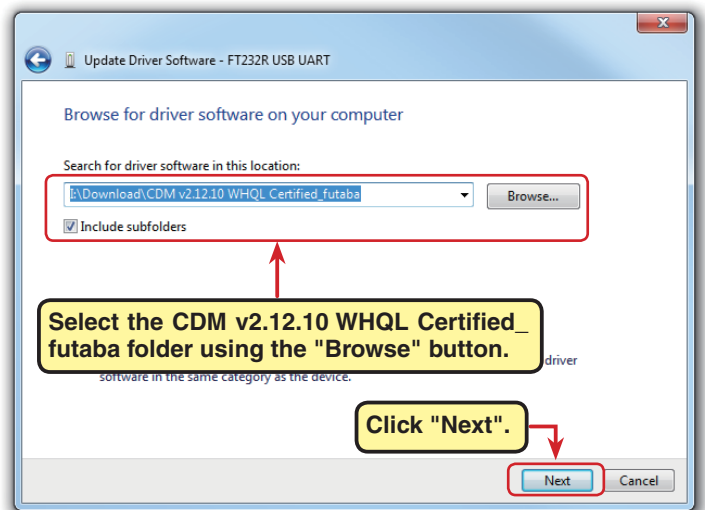
2. Right click the icon "FT232R USB UART" and then click "Update Driver software...".



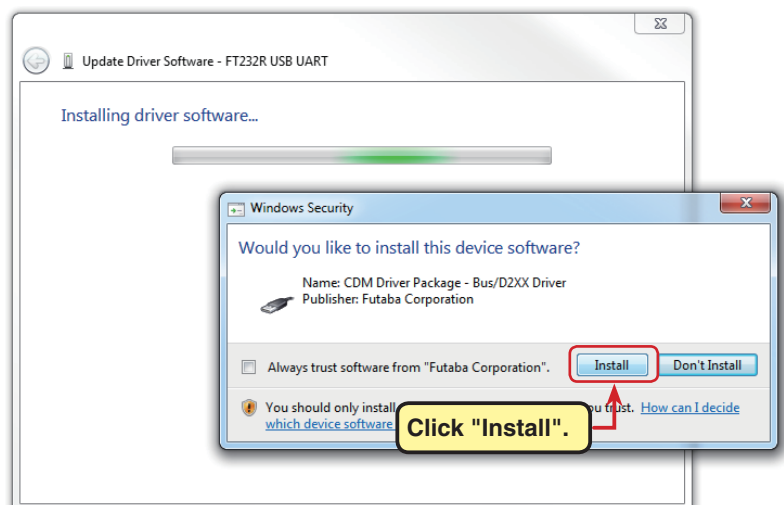
3. Click "Browse my computer for driver software".



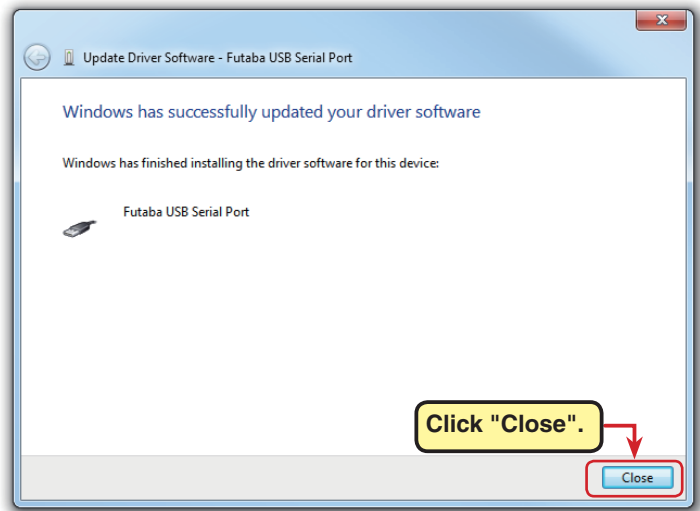
4. Make sure a check mark is in the box for "Includes subfolders" and select the CDM v2.12.10 WHQL Certified_futaba folder using the "Browse" button and then click "Next".



5. During installation, a "Would you like to install this device software?" is displayed. Click "Install".

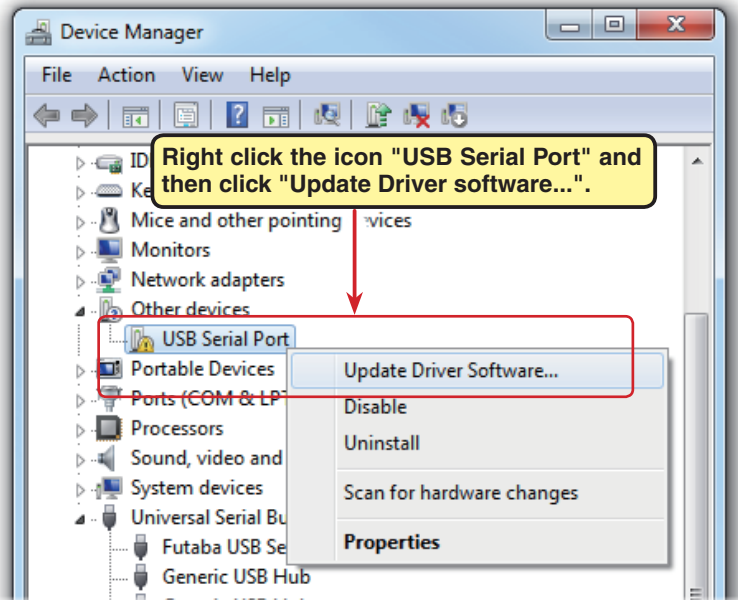


6. When "Windows has successfully updated your driver software" appears, click "Close".

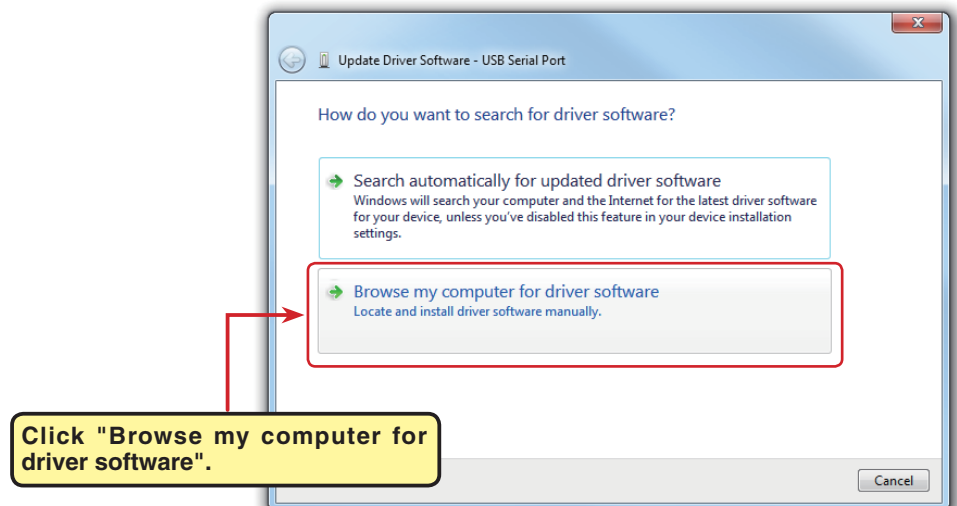


7. Open the Windows Device Manager.

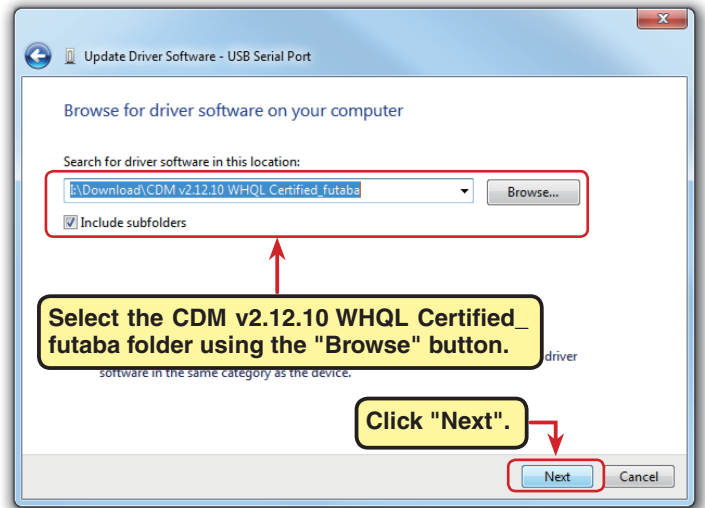
Right click the icon "USB Serial Port" and then click "Update Driver software...".



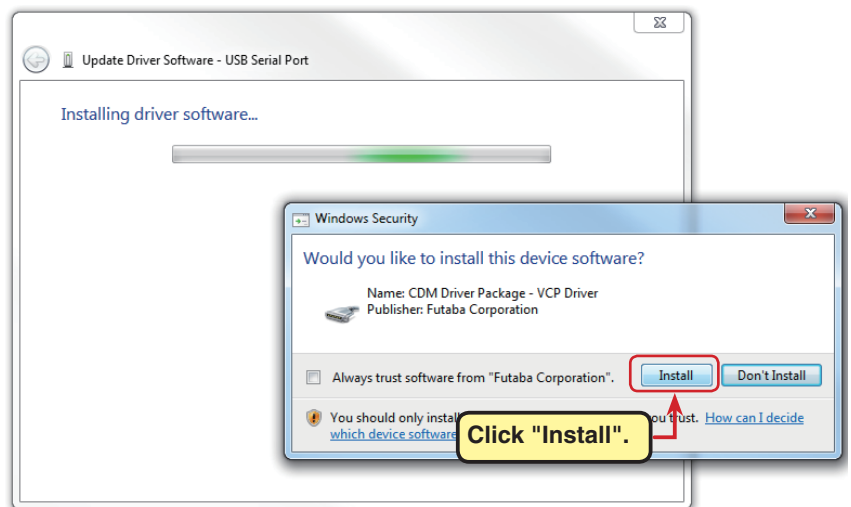
8. Click "Browse my computer for driver software".



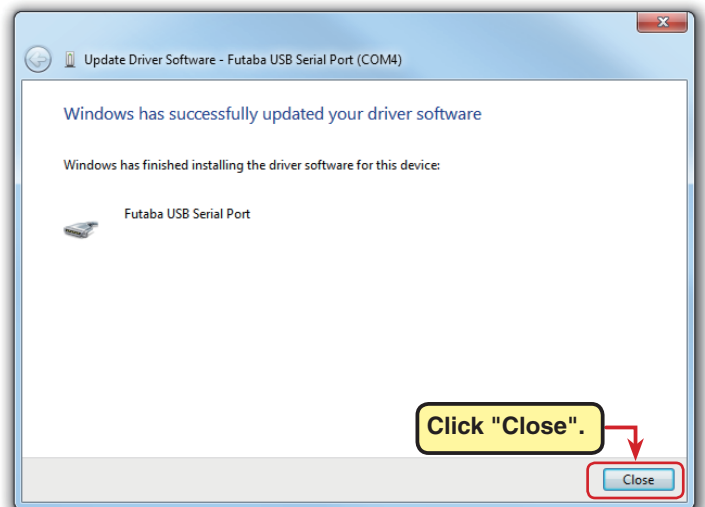
- 9.** Make sure a check mark is in the box for "Includes subfolders" and select the CDM v2.12.10 WHQL Certified_futaba folder using the "Browse" button and then click "Next".



- 10.** During installation, a "Would you like to install this device software?" is displayed. Click "Install".



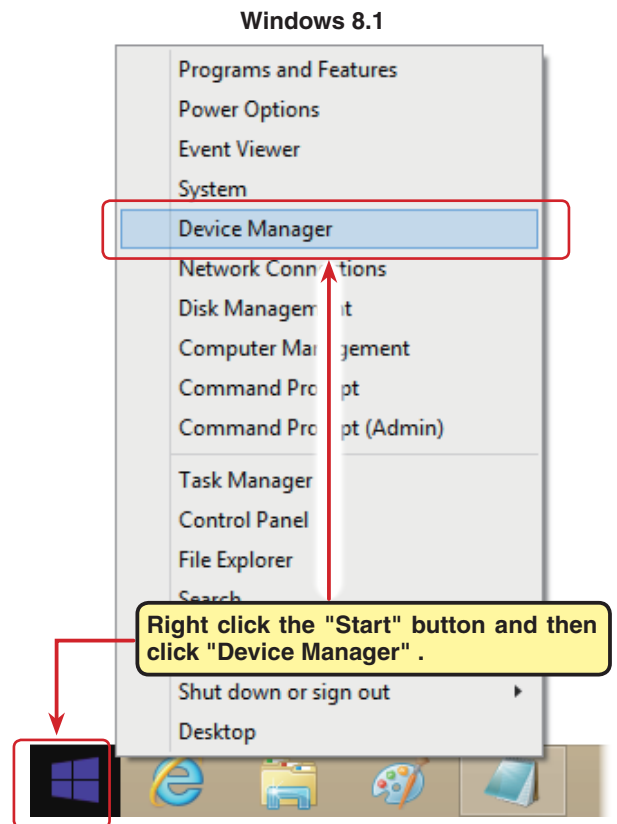
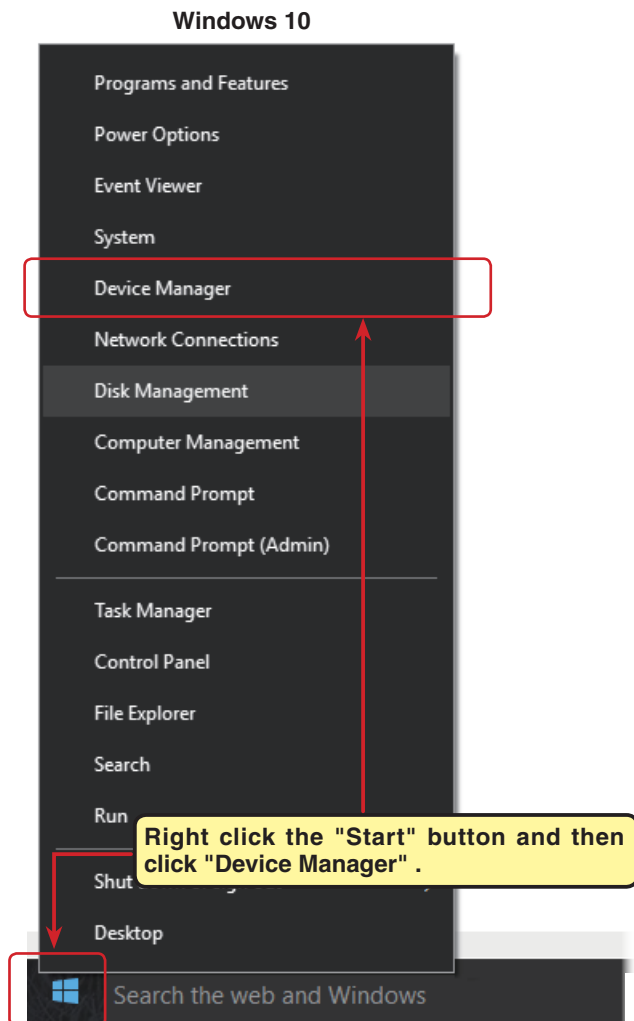
- 12.** When "Windows has successfully updated your driver software" appears, click "Close".



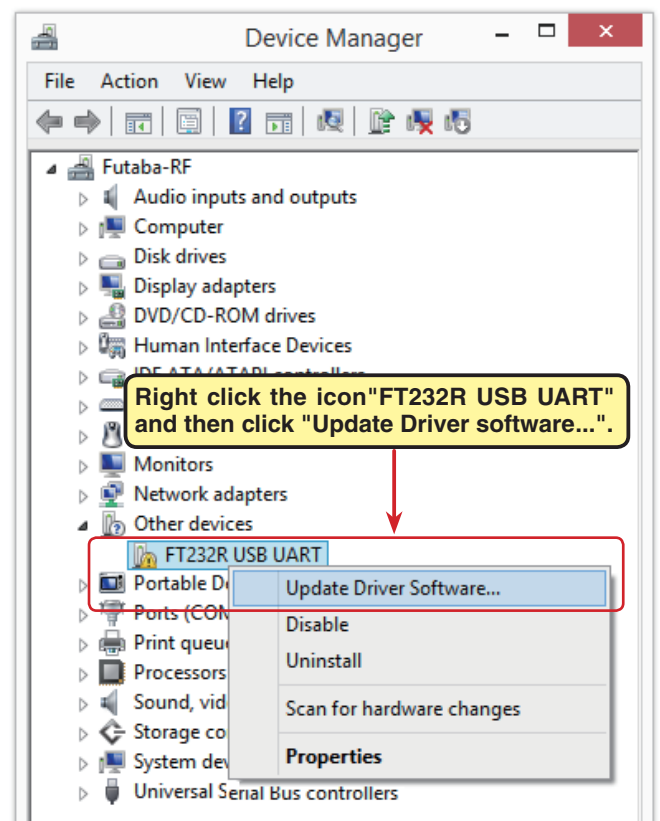
This completes installation of the CIU-2 drivers. Next, set the COM port. (Page12)

Driver installation (Using Windows 8.1/Windows 10 as an example)

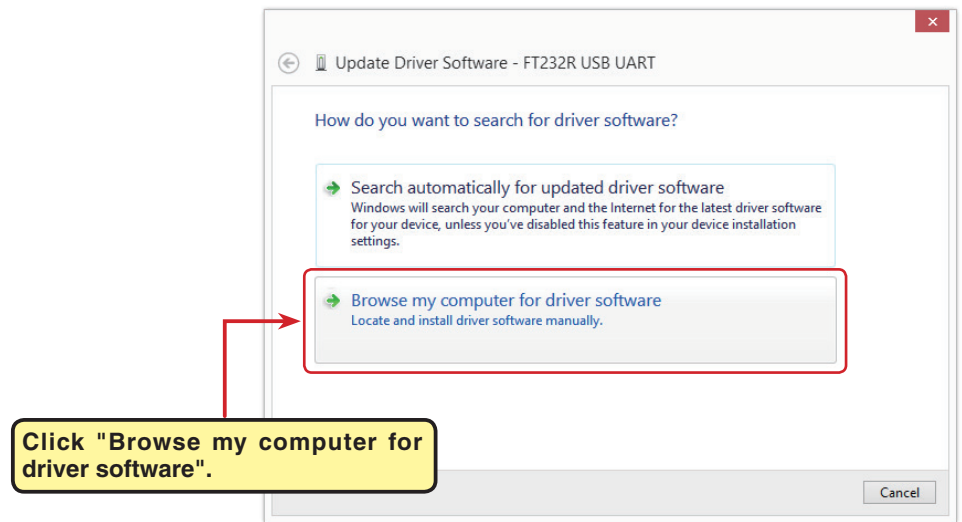
1. To open Windows Device Manager. From Windows desktop, right click on the "Start" button. and then click "Device Manager" .



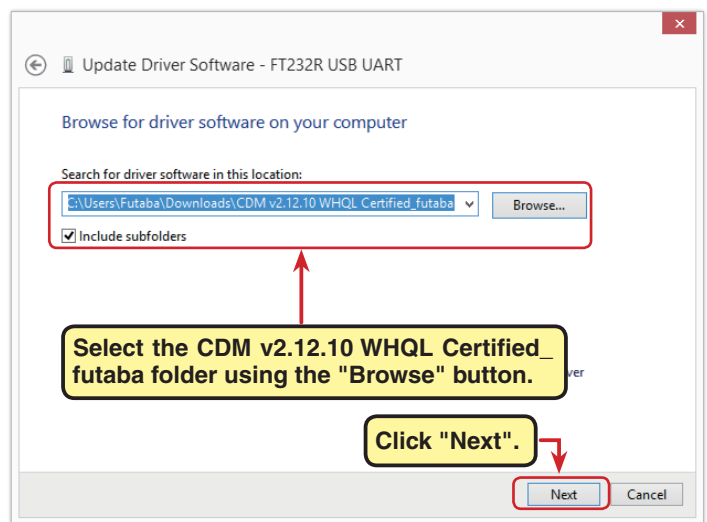
2. Right click the icon "FT232R USB UART" and then click "Update Driver software..." .



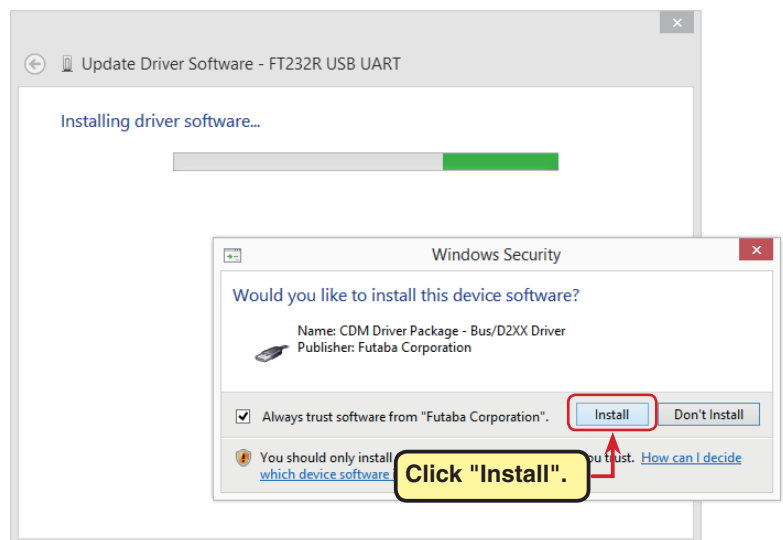
3. Click "Browse my computer for driver software".



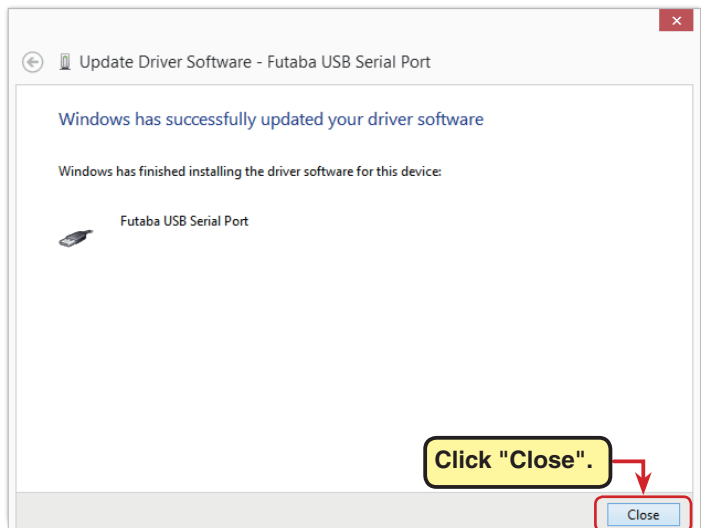
4. Make sure a check mark is in the box for "Includes subfolders" and select the CDM v2.12.10 WHQL Certified_futaba folder using the "Browse" button and then click "Next".



5. During installation, a "Would you like to install this device software?" is displayed. Click "Install".

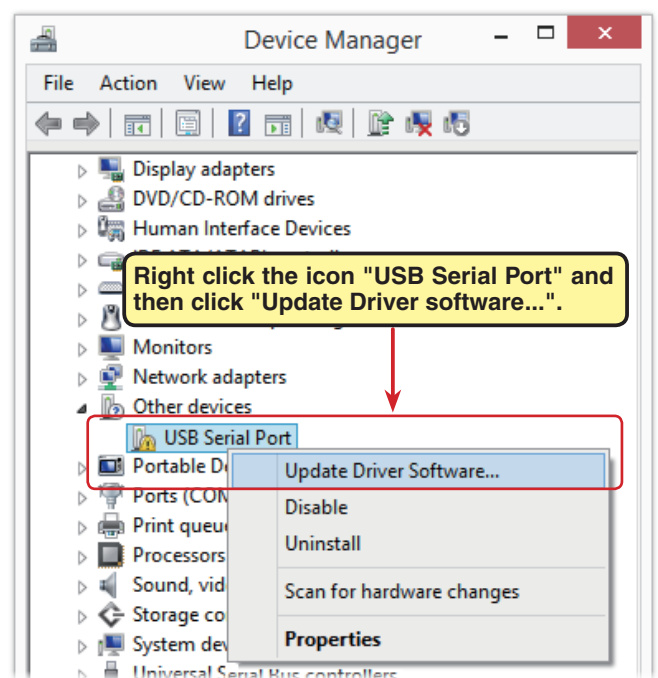


6. When "Windows has successfully updated your driver software" appears, click "Close".

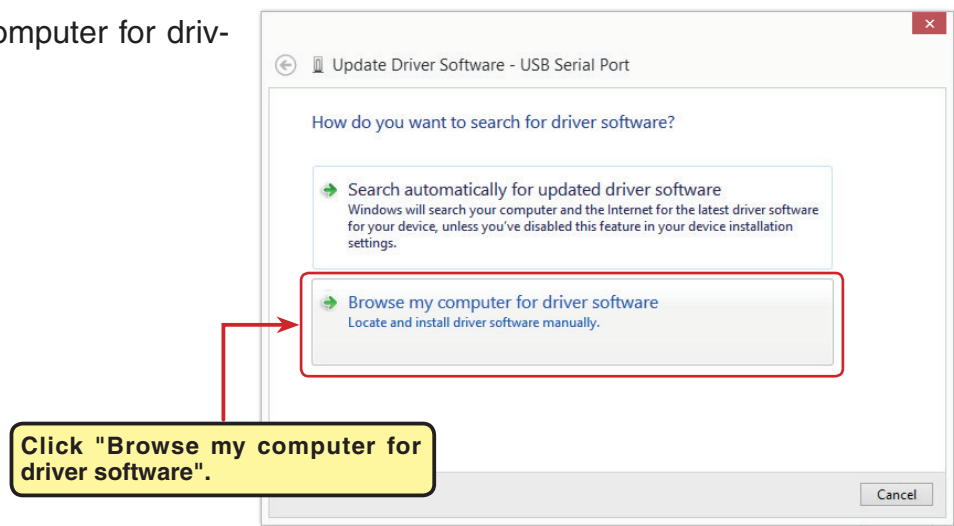


7. Open the Windows Device Manager.

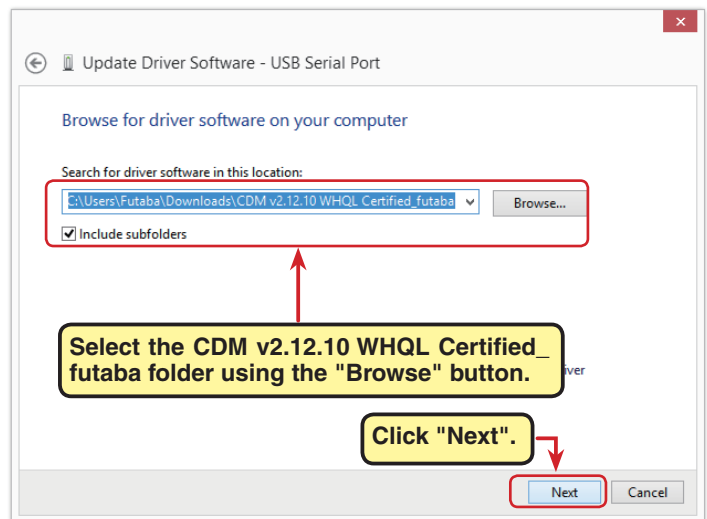
8. Right click the icon "USB Serial Port" and then click "Update Driver software..."



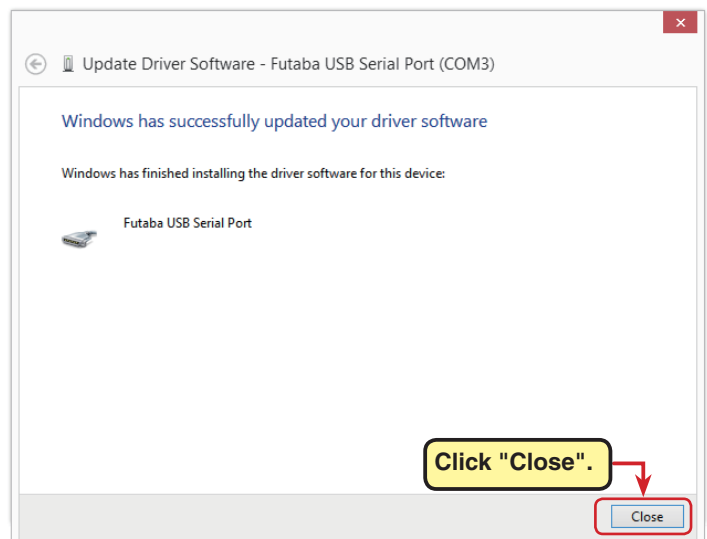
9. Click "Browse my computer for driver software".



- 10.** Make sure a check mark is in the box for "Includes subfolders" and select the CDM v2.12.10 WHQL Certified_futaba folder using the "Browse" button and then click "Next".



- 11.** When "Windows has successfully updated your driver software" appears, click "Close".



This completes installation of the CIU-2 drivers. Next, set the COM port. (Page12)

COM port confirmation and setting

When the drivers are installed and the CIU-2 and Windows PC can communicate with each other, the LED on the CIU-2 lights green.

Next, to use the CIU-2 and Link programs, COM port number confirmation and setting by Windows Device Manager are necessary.

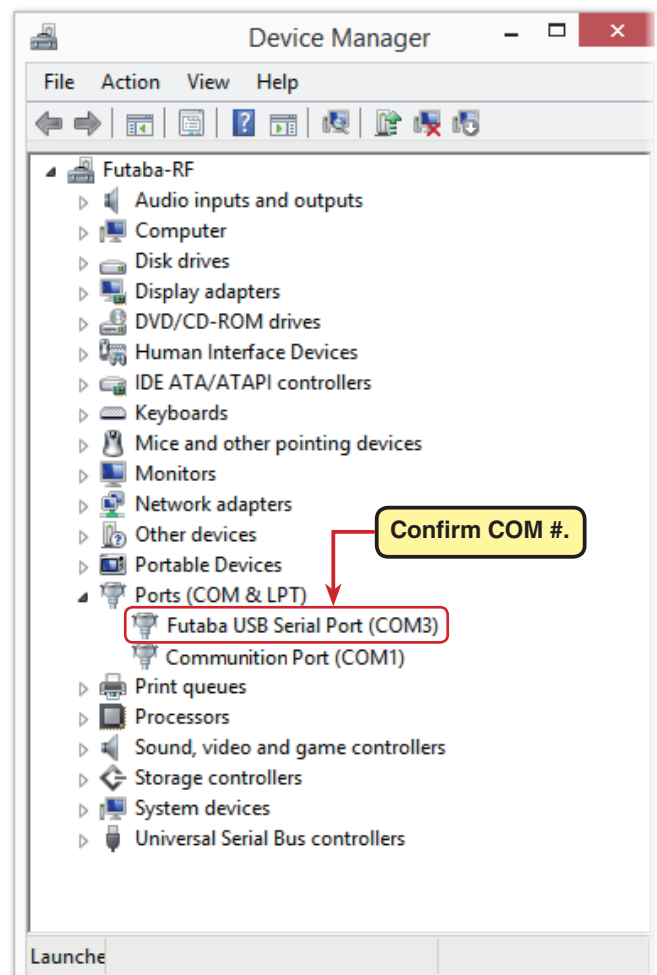
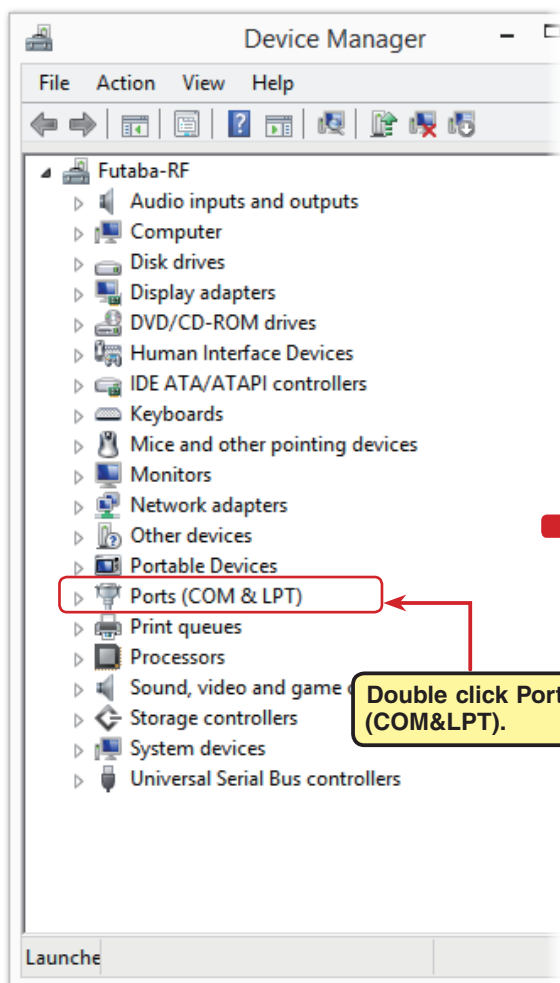


LED lights green.

COM port confirmation

*The following description uses Windows XP as an example.)

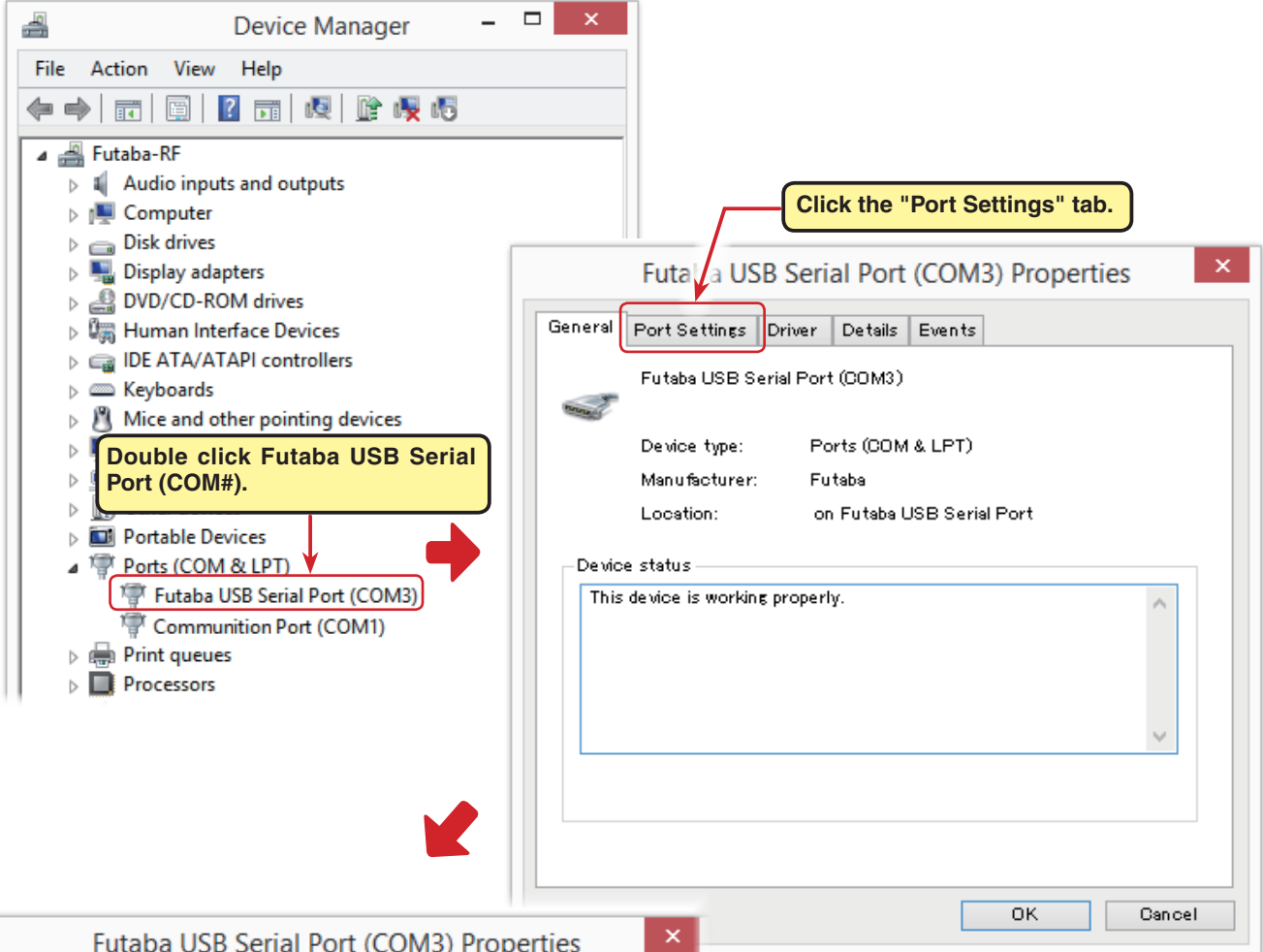
1. Open the Windows Device Manager.
Windows Vista and Windows 7 (see page 4)
Windows 8.1 and Windows 10 (see page 8)
2. Double click "Ports (COM&LPT)" of Device Manager. A list of ports is displayed.
Confirm the COM number. "#" of Futaba USB Serial Port (Com #) is the COM number. In the example shown below, the COM number is COM3. However, this number will differ depending on the computer system used. Always check the COM number, because the Link program has a COM setting.



COM port setting

Set the COM port.

Double click the "Futaba USB Serial Port (COM#)" icon. The Futaba USB Serial Port (COM#) properties are displayed. Click the Port Settings tab and refer to the following and set the communications parameters and then end by clicking the "OK" button. Close the Device Managers, etc.



The first screenshot shows the Windows Device Manager. Under the 'Ports (COM & LPT)' category, the 'Futaba USB Serial Port (COM3)' is highlighted. A yellow callout box says 'Double click Futaba USB Serial Port (COM#)'. A red arrow points from this box to the 'Futaba USB Serial Port (COM3)' icon. Another red arrow points from the 'Futaba USB Serial Port (COM3)' icon to the 'Futaba USB Serial Port (COM3) Properties' dialog box.

The second screenshot shows the 'Futaba USB Serial Port (COM3) Properties' dialog box. The 'Port Settings' tab is selected. A yellow callout box says 'Click the "Port Settings" tab.' A red arrow points from this box to the 'Port Settings' tab. The 'Device status' section shows 'This device is working properly.' The 'OK' button is highlighted with a red box.

The third screenshot shows the 'Futaba USB Serial Port (COM3) Properties' dialog box with the 'Port Settings' tab selected. A red box highlights the communication parameters: Bits per second: 9600, Data bits: 8, Parity: Odd, Stop bits: 1, and Flow control: None. A yellow callout box says 'Click "OK".' A red arrow points from this box to the 'OK' button. A red arrow also points from the 'OK' button to a table of settings.

Bits per second:	9600
data bits:	8
parity:	Odd
Stop bits:	1
Flow control:	None

Set each Port settings item as shown in the table above.